



Indian
MOTORCYCLE

© 2019 Indian Motorcycle®

When you are enjoying your new Indian® motorcycle, always wear a homologated helmet, protective eyewear and clothing and insist that your passenger does the same. Ride within the limits of the law and your own abilities. Read and understand your owner's manual. Never ride under the influence of drugs or alcohol. Indian Motorcycle® strongly recommends that all riders take a motorcycle safety rider course based in your market. For the name of your nearest Indian Motorcycle® dealership visit our website at www.indianmotorcycle.com. All riders are professionals and on a closed course. To the best knowledge of Polaris Sales Europe Sarl, the specifications, descriptions and illustrative material contained herein are accurate as of the date this catalogue was approved for printing. Polaris Sales Europe Sarl reserves the right, without prior notice, to discontinue at any time at its discretion any of the items herein or change specifications or designs without incurring any obligation to the customer. All items are subject to availability. Some items are not available in all countries. Please ask your dealer about availability. Location photography by Todd Williams Photography. Studio Photography by SAGA Marketing. Catalog design by SAGA Marketing.

Indian® and Indian Motorcycle® are registered trademarks of Indian Motorcycle International, LLC. 3M® is a registered trademark of 3M Company. American Flat Track® is a trademark of Daytona Motorsports Group. Bluetooth® is a registered trademark of Bluetooth Sig, Inc. Debonaire® is a registered trademark of Durfort Holdings, S.A. King Baby® is a registered trademark of King Baby Studio, Inc. Lexan® is a registered trademark of Sabic Innovative Plastics IP B.V. NuShoe® is a registered trademark of NuShoe, Inc. Pinlock® is a registered trademark of Pinlock Patent B.V. besloten vennootschap (b.v.). Red Wing® and Red Wing Shoes® are registered trademarks of Red Wing Shoe Company, Inc. Velcro® is a registered trademark of Velcro Industries B.V. Ltd Co. Netherlands. Vibram® is a registered trademark of Vibram S.P.A. Corporation Italy. YKK® is a registered trademark of YKK Corporation. Cordura® is a registered trademark of Invista North America S.A.R.L. Corp Luxembourg. Rokker® Jeans is a registered trademark of The Rokker Company.



2020 COLLECTION
**APPAREL
& GIFTS**

DEALER CATALOG

Indian
MOTORCYCLE



2020 COLLECTION APPAREL & GIFTS

THE BASICS

For 2020 we introduce exciting new products with our most comprehensive range to date including the FTR™ 1200 collection, inspired by Indian Motorcycle's exciting new motorcycle.

This range will help you to grow apparel sales to new customers, as well as existing riders.

To grow Indian Motorcycle® as a brand, it is important that our apparel offerings are consistent with our brand. To ensure this process, everything with an Indian Motorcycle® name, logo, brand asset, or historical piece in the marketplace must be approved by our Licensing and Apparel Team.

DEALER CUSTOMIZED PRODUCT PROGRAM

Working with official licensed partner Indigo Clothing (UK), we offer a range of customizable clothing products that dealers can order exclusively for their dealership. In order to protect the Indian Motorcycle® brand and ensure we continue to grow this great brand, only fully approved customized products, that are purchased through Indigo, can be sold by dealers featuring the Indian Motorcycle® trademark logos. No other vendors are approved and cannot produce Indian® branded products for dealers to sell. The production of non-licensed dealer apparel, that bears the Indian Motorcycle® logo, is strictly prohibited.

Customized t-shirts, hoodies and hats make ideal additions to your product offering. You can utilize these garments for: open houses, new model launches, local and regional events.

Indigo will work with you to develop name-drop or fully customized designs, that make each t-shirt individual to your dealer location.

How to Order

- Visit <http://indian.polaristshirts.com>.
- Create a password using the link that will be emailed to you.
- Note the website has language and currency options to help you.
- For further details contact jo@indigoclothing.com or call +44 207 375 6470.

Order Information

- Minimum order of 48 pieces for a custom design.
- Supply a brief for a custom design or artwork files. Note dealer supplied artwork is subject to approval and may need to change.
- All designs will be approved by Polaris® EMEA prior to the order being confirmed and printed. Indigo will manage this process.
- Shipping costs are added at checkout and are based on shipping from UK.
- Please allow 3-4 weeks from placing order to ready to ship.



OFFICIAL LICENSED PRODUCTS

The following partners offer a range of high quality products you can order from Indian Motorcycle® directly and take advantage of additional revenue and margin opportunities.

Custom Dealer Tees: Indigo Clothing - <http://indian.polaristshirts.com>

King Baby®: Jewelry - contact brian@kingbaby.com

Game Room Range: Holland Bar Stool - contact chad@hollandbarstool.com

Visit the websites or contact the people listed above for further details of what these partners offer and how to order.

FINAL SEASON

FINAL SEASON

Products marked "Final Season" are only available while stock lasts and will be obsolete after 2020. Clear out your stock ASAP so you can reinvest in current lines. Markdown Final Season stock in your store to sell it quicker.

The following lines are in Final Season and should be cleared:

Lightweight Mesh Jacket, P. 11
Retro Bomber Jacket, P. 12
Women's Adeline Jacket, P. 17
Women's Bessie Jacket, P. 17
Women's Lightweight Mesh Jacket, P. 19
Logo Tee- Gray Marl, P. 44
Logo Sweat, P. 47
IMC Contrast Zip Thru, P. 48
Women's Cold Shoulder Tee, P. 52
Women's Ecru Logo V-Neck Tee, P. 57

Women's 3 Qtr Sleeve Henley, P. 57
Women's Headdress Tank, Port, P. 59
Women's Snow Wash Tank, Gray, P. 59
Women's IMC Contrast Zip Thru, P. 60
Women's Logo Sweat, P. 60
Waxed Cotton Backpack, P. 72
Waxed Cotton Duffle Bag, P. 72
Waxed Cotton Messenger Bag, P. 72
Waxed Cotton Wash Bag, P. 72
Waxed Cotton Tote- Black, P. 72

STOCKING FOR THE SEASON

To determine a typical size run for a jacket, look at your retail velocity and demographic. Below is example sizing typically needed for one jacket or casualwear item depending on the size of your dealership.

CASUALWEAR		
	Men's	Women's
S		1
M	1	2
L	2	2
XL	2	1
2X	1	

JACKETS		
	Men's	Women's
S		1
M	1	2
L	2	2
XL	2	1
2X	1	

To get the best out of your upcoming order, ensure you have the right mix of products for the 2020 season. Your selections directly affect your season's apparel sales performance, including profitability and customer satisfaction.

Also consider your online business. The Polaris® e-commerce system is designed to support dealer online sales for apparel and gift items. Ensure you regularly check for available orders you can fulfil via your stock. **Online sales should account for at least 10-15% of your total apparel & gift revenue.** This will increase during peak periods such as holidays and the start of the riding season.

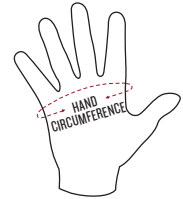
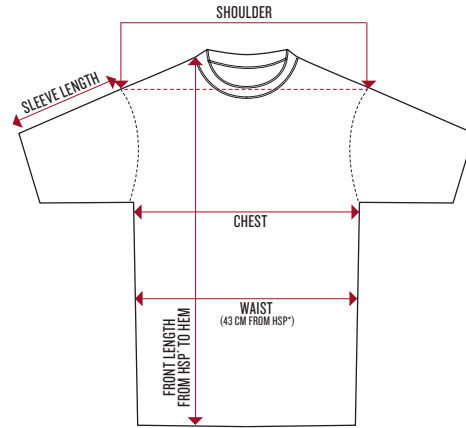
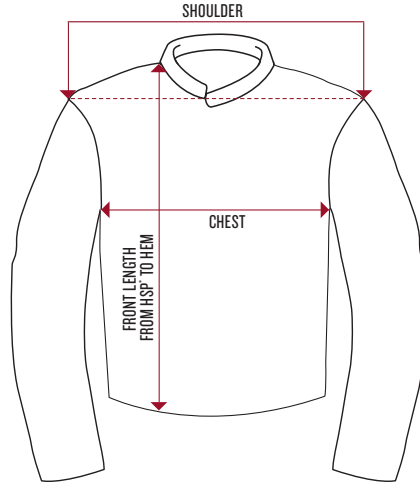
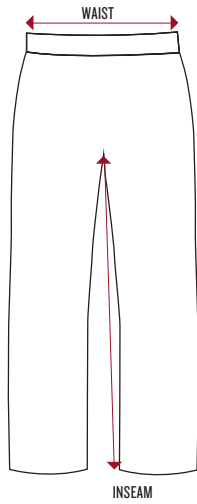
BEFORE YOU ORDER

Consider what budget you have for this collection.

- Your retail space needs to work to its maximum potential. Do not under or over-fill your apparel display. Focus on fewer styles in greater stock depth, so you have sizes available in store for customers to purchase.
- Stock the right amount of product to maximize apparel and gift sales, online and in-store. Make sure you introduce the apparel range when selling new vehicles.
- What is Final Season, and will be obsolete with the new collection?
- Consider your online store demand and plan for increases near your events, e.g. Open Houses, Demo Days, etc.
- Don't be too conservative. If you believe in a product you will sell it. You won't sell anything new if you don't present anything new.
- Buy products you like, but make sure you have something for every rider/buyer that comes into your dealership.

If you don't stock what your customers want they will go somewhere else to buy their product!

APPAREL SIZE CHARTS



MEN'S V-TWIN FIT JACKETS

SIZE	CHEST		SHOULDER		RIDE LEATHER FRONT LENGTH FROM HSP*		RIDE TEXTILE FRONT LENGTH FROM HSP*		MESH FRONT LENGTH FROM HSP*		RIDE CASUAL FRONT LENGTH FROM HSP*	
	IN	CM	IN	CM	IN	CM	IN	CM	IN	CM	IN	CM
XS	40.2 - 41.7	102 - 106	20.1	51	25.2	64	25.6	65	25.6	65	25.6	65
S	43.3 - 44.9	110 - 114	20.5	52	25.6	65	26.0	66	26.0	66	26.0	66
M	46.5 - 48	118 - 122	20.9	53	26.0	66	26.4	67	26.4	67	26.4	67
L	49.6 - 51.2	126 - 130	21.3	54	26.4	67	26.8	68	26.8	68	26.8	68
XL	53.5 - 55.1	136 - 140	22.0	56	27.2	69	27.6	70	27.6	70	27.6	70
XL-TALL	53.5 - 55.1	136 - 140	22.0	56	28.7	73	/	/	/	/	/	/
2XL	57.5 - 59	146 - 150	22.8	58	28.0	71	28.3	72	28.3	72	28.3	72
2XL-TALL	57.5 - 59	146 - 150	22.8	58	29.5	75	/	/	/	/	/	/
3XL	61.4 - 63	156 - 160	23.6	60	28.7	73	29.1	74	29.1	74	29.1	74
3XL-TALL	61.4 - 63	156 - 160	23.6	60	30.3	77	/	/	/	/	/	/
4XL	65.4 - 66.9	166 - 170	24.4	62	29.5	75	29.9	76	29.9	76	29.9	76
5XL	69.3 - 70.9	176 - 180	25.2	64	30.3	77	30.7	78	30.7	78	30.7	78

MEN'S V-TWIN FIT VESTS

SIZE	CHEST		SHOULDER		FRONT LENGTH FROM HSP*	
	IN	CM	IN	CM	IN	CM
XS	39 - 40.2	99 - 102	17.7	45	27.0	68.5
S	42.1 - 43.3	107 - 110	18.1	46	27.4	69.5
M	45.3 - 46.5	115 - 118	18.5	47	27.8	70.5
L	48.4 - 49.6	123 - 126	18.9	48	28.1	71.5
XL	52.4 - 53.5	133 - 136	19.7	50	28.9	73.5
2XL	56.3 - 57.5	143 - 146	20.5	52	29.7	75.5
3XL	60.2 - 61.4	153 - 156	21.3	54	30.5	77.5
4XL	64.2 - 65.4	163 - 166	22.0	56	31.3	79.5
5XL	68.1 - 69.3	173 - 176	22.8	58	40.0	101.5

MEN'S RELAXED FIT JACKETS

SIZE	CHEST		SHOULDER		FRONT LENGTH FROM HSP*	
	IN	CM	IN	CM	IN	CM
S	50	127	20.4	51.8	24.5	62
M	52.5	133.3	21	53.3	25	63.5
L	58	147.3	22	55.9	26	65.5
XL	62.5	158.8	23	58.4	26.5	67
2XL	66	167.6	24	61	27	69
3XL	68	172.7	24.5	62.2	27.5	70

Relaxed fit is wider in the shoulder, body and sleeve and shorter in body length than the V-Twin fit.

RAINSUIT- JACKET

SIZE	CHEST		SHOULDER		FRONT LENGTH FROM HSP*	
	IN	CM	IN	CM	IN	CM
XS	44.9	114	21.3	54	27.0	68.5
S	48.0	122	21.7	55	27.4	69.5
M	51.2	130	22.0	56	27.8	70.5
L	54.3	138	22.4	57	28.1	71.5
XL	58.3	148	23.2	59	28.9	73.5
2XL	62.2	158	24.0	61	29.7	75.5
3XL	66.1	168	24.8	63	30.5	77.5
4XL	70.1	178	25.6	65	31.3	79.5
5XL	74.0	188	26.4	67	32.1	81.5

RAINSUIT- PANTS

SIZE	WAIST (RELAXED)		INSEAM	
	IN	CM	IN	CM
XS	33.1	84	31.9	81
S	34.6	88	32.3	82
M	36.2	92	32.7	83
L	39.4	100	33.3	84.5
XL	42.5	108	33.9	86
2XL	45.7	116	34.4	87.5
3XL	48.8	124	35.0	89
4XL	52.0	132	35.6	90.5
5XL	55.1	140	36.2	92

MEN'S JEANS

INSEAM (IN)	WAIST (IN)						
	32	30	32	34	36	38	40
34	30	32	34	36	38	40	

WOMEN'S JEANS

INSEAM (IN)	WAIST (IN)						
	34	26	27	28	29	30	31

WOMEN'S V-TWIN FIT JACKETS

SIZE	CHEST		SHOULDER		RIDE LEATHER FRONT LENGTH FROM HSP*		RIDE MESH FRONT LENGTH FROM HSP*		CASUAL LEATHER FRONT LENGTH FROM HSP*		CASUAL TEXTILE FRONT LENGTH FROM HSP*	
	IN	CM	IN	CM	IN	CM	IN	CM	IN	CM	IN	CM
XS	37.0	94	16.5	42	24.0	61	25.8	65.5	21.9	55.5	24.4	62
S	39.4	100	16.9	43	24.8	63	26.6	67.5	22.6	57.5	25.2	64
M	41.7	106	17.3	44	25.6	65	27.4	69.5	23.4	59.5	26.0	66
L	44.1	112	17.7	45	26.4	67	28.1	71.5	24.2	61.5	26.8	68
XL	47.2	120	18.5	47	27.2	69	28.9	73.5	25.0	63.5	27.6	70
2XL	50.4	128	19.3	49	28.0	71	29.7	75.5	25.8	65.5	28.3	72
3XL	53.5	136	20.1	51	28.7	73	30.5	77.5	26.6	67.5	29.1	74

WOMEN'S V-TWIN FIT VESTS

SIZE	CHEST		SHOULDER		FRONT LENGTH FROM HSP*	
	IN	CM	IN	CM	IN	CM
XS	34.6	88	10.8	27.5	21.3	54
S	37.0	94	11.4	29	22.0	56
M	39.4	100	12.0	30.5	22.8	58
L	41.7	106	12.6	32	23.6	60
XL	44.9	114	13.4	34	24.4	62
2XL	48.0	122	14.2	36	25.2	64
3XL	51.2	130	15.0	38	26.0	66
1W	69.7	177	12.6	32	24.4	62
2W	49.2	125	13.4	34	25.2	64
3W	52.4	133	14.2	36	26.0	66

PART NUMBER SIZE GUIDE- APPAREL**

SIZE	XS	S	M	L	LT	XL	XLT	2XL	2XLT	3XL	3XLT	4XL	5XL	1W	2W	3W
PART #	01	02	03	06	08	09	11	12	13	14	20	15	16	17	18	19

**Based on the size you are ordering, add the above number to the end of the item's part number. LT, XLT, 2XLT, 3XLT are tall sizes.

PART NUMBER SIZE GUIDE- FOOTWEAR**

SIZE	05	06	07	08	09	10	11	12	13
PART #	05	06	07	08	09	10	11	12	13

**Based on the size you are ordering, add the above number to the end of the item's part number.

MEN'S TEES								
	CHEST		SHOULDER		FRONT LENGTH FROM HSP*		SLEEVE LENGTH	
SIZE	IN	CM	IN	CM	IN	CM	IN	CM
S	18.5	47	17.3	44	28.0	71	7.5	19
M	20.5	52	18.9	48	28.7	73	8.3	21
L	22.4	57	20.5	52	29.5	75	9.1	23
XL	24.4	62	22.0	56	30.3	77	9.8	25
2XL	26.4	67	23.6	60	31.1	79	10.6	27
3XL	28.3	72	25.2	64	31.9	81	11.4	29
4XL	31.3	79.5	27.6	70	33.1	84	12.6	32
5XL	34.3	87	29.9	76	34.3	87	13.8	35

MEN'S FASHION FIT TEES								
	CHEST		SHOULDER		FRONT LENGTH FROM HSP*		SLEEVE LENGTH	
SIZE	IN	CM	IN	CM	IN	CM	IN	CM
S	18.5	47	17.5	44.5	28.3	72	6.7	17
M	20.5	52	19.1	48.5	29.1	74	7.5	19
L	22.4	57	20.7	52.5	29.9	76	8.3	21
XL	24.4	62	22.2	56.5	30.7	78	9.1	23
2XL	26.4	67	23.8	60.5	31.5	80	9.8	25
3XL	28.3	72	25.4	64.5	32.3	82	10.6	27

A closer fit with slimmed down shoulder and sleeve. Chest width is larger than our other tees, however fit narrows from chest, to waist, to hem, giving an overall slimmer fit.

MEN'S SLEEVELESS TEES						
	CHEST		SHOULDER		FRONT LENGTH FROM HSP*	
SIZE	IN	CM	IN	CM	IN	CM
S	18.5	47	16.1	41	28.0	71
M	20.5	52	17.7	45	28.7	73
L	22.4	57	19.3	49	29.5	75
XL	24.4	62	20.9	53	30.3	77
2XL	26.4	67	22.4	57	31.1	79
3XL	28.3	72	24.0	61	31.9	81
4XL	31.3	79.5	26.4	67	33.1	84
5XL	34.3	87	28.7	73	34.3	87

MEN'S HOODIES & SWEATS						
	CHEST		SHOULDER		FRONT LENGTH FROM HSP*	
SIZE	IN	CM	IN	CM	IN	CM
S	20.1	51	18.1	46	26.8	68
M	22.0	56	19.7	50	27.6	70
L	24.0	61	21.3	54	28.3	72
XL	26.0	66	22.8	58	29.1	74
2XL	28.0	71	24.4	62	29.9	76
3XL	29.9	76	26.0	66	30.7	78
4XL	32.9	83.5	28.3	72	31.9	81
5XL	35.8	91	30.7	78	33.1	84

MEN'S SHIRTS						
	CHEST		SHOULDER		FRONT LENGTH FROM HSP*	
SIZE	IN	CM	IN	CM	IN	CM
S	20.1	51	18.1	46	29.9	76
M	22.0	56	19.7	50	30.7	78
L	24.0	61	21.3	54	31.5	80
XL	26.0	66	22.8	58	32.3	82
2XL	28.0	71	24.4	62	33.1	84
3XL	29.9	76	26.0	66	33.9	86
4XL	32.9	83.5	28.3	72	35.0	89
5XL	35.8	91	30.7	78	36.2	92

WOMEN'S TEES- CLOSE FIT (STRETCH FABRIC)								
	CHEST		WAIST		SHOULDER		FRONT LENGTH FROM HSP*	
SIZE	IN	CM	IN	CM	IN	CM	IN	CM
XS	15.4	39	13.4	34	15.0	38	25.6	65
S	16.5	42	14.6	37	15.6	39.5	26.0	66
M	17.7	45	15.7	40	16.1	41	26.4	67
L	18.9	48	16.9	43	16.7	42.5	26.8	68
XL	20.5	52	18.5	47	17.5	44.5	27.2	69
2XL	22.0	56	20.1	51	18.3	46.5	27.6	70
3XL	23.6	60	21.7	55	19.1	48.5	28.0	71

WOMEN'S TEES- RELAXED FIT								
	CHEST		WAIST		SHOULDER		FRONT LENGTH FROM HSP*	
SIZE	IN	CM	IN	CM	IN	CM	IN	CM
XS	16.9	43	15.2	38.5	15.4	39	24.8	63
S	18.1	46	16.3	41.5	15.9	40.5	25.2	64
M	19.3	49	17.5	44.5	16.5	42	25.6	65
L	20.5	52	18.7	47.5	17.1	43.5	26.0	66
XL	22.0	56	20.3	51.5	17.9	45.5	26.4	67
2XL	23.6	60	21.9	55.5	18.7	47.5	26.8	68
3XL	25.2	64	23.4	59.5	19.5	49.5	27.2	69

WOMEN'S TANKS- CLOSE FIT						
	CHEST		WAIST		FRONT LENGTH FROM HSP*	
SIZE	IN	CM	IN	CM	IN	CM
XS	15.4	39	13.4	34	25.2	64
S	16.5	42	14.6	37	25.6	65
M	17.7	45	15.7	40	26.0	66
L	18.9	48	16.9	43	26.4	67
XL	20.5	52	18.5	47	26.8	68
2XL	22.0	56	20.1	51	27.2	69
3XL	23.6	60	21.7	55	27.6	70

WOMEN'S TANKS- RELAXED FIT						
	CHEST		WAIST		FRONT LENGTH FROM HSP*	
SIZE	IN	CM	IN	CM	IN	CM
XS	16.9	43	15.2	38.5	24.0	61
S	18.1	46	16.3	41.5	24.4	62
M	19.3	49	17.5	44.5	24.8	63
L	20.5	52	18.7	47.5	25.2	64
XL	22.0	56	20.3	51.5	25.6	65
2XL	23.6	60	21.9	55.5	26.0	66
3XL	25.2	64	23.4	59.5	26.4	67

WOMEN'S HOODIES & SWEATS								
	CHEST		WAIST		SHOULDER		FRONT LENGTH FROM HSP*	
SIZE	IN	CM	IN	CM	IN	CM	IN	CM
XS	19.3	49	17.7	45	17.5	44.5	24.8	63
S	20.5	52	18.9	48	18.1	46	25.2	64
M	21.7	55	20.1	51	18.7	47.5	25.6	65
L	22.8	58	21.3	54	19.3	49	26.0	66
XL	24.4	62	22.8	58	20.1	51	26.4	67
2XL	26.0	66	24.4	62	20.9	53	26.8	68
3XL	27.6	70	26.0	66	21.7	55	27.2	69

WOMEN'S SHIRTS								
	CHEST		WAIST		SHOULDER		FRONT LENGTH FROM HSP*	
SIZE	IN	CM	IN	CM	IN	CM	IN	CM
XS	17.3	44	16.1	41	15.4	39	25.0	63.5
S	18.5	47	17.3	44	15.9	40.5	25.4	64.5
M	19.7	50	18.5	47	16.5	42	25.8	65.5
L	20.9	53	19.7	50	17.1	43.5	26.2	66.5
XL	22.4	57	21.3	54	17.9	45.5	26.6	67.5
2XL	24.0	61	22.8	58	18.7	47.5	27.0	68.5
3XL	25.6	65	24.4	62	19.5	49.5	27.4	69.5

JUNIOR'S BODYSUIT							
MONTHS	3-6		6-12		12-18		
	IN	CM	IN	CM	IN	CM	
CHEST	9	23	9.5	24	10	25	
FRONT LENGTH FROM HSP*	15.5	40	16.5	42	17.5	44	

JUNIOR'S TEE								
YEARS	2-3		3-4		4-5		5-6	
	IN	CM	IN	CM	IN	CM	IN	CM
CHEST	12.2	31	13	33	13.8	35	14.6	37
FRONT LENGTH FROM HSP*	15	38	16.1	41	17.3	44	18.5	47

MEN'S GLOVES		
HAND CIRCUMFERENCE		
SIZE	IN	CM
S	8.1	20.65
M	8.4	21.45
L	8.8	22.25
XL	9.1	23.05
2XL	9.4	23.85
3XL	9.7	24.65
4XL	10	25.45

WOMEN'S GLOVES		
HAND CIRCUMFERENCE		
SIZE	IN	CM
S	7.2	18.3
M	7.5	19.1
L	7.8	19.9
XL	8.2	20.7

MEN'S FOOTWEAR					
USA	EU	UK	IN	CM	
7	39	6	9.8	25	
8	41	7	10.2	26	
9	42	8	10.6	27	
10	43	9	11	28	
11	44.5	10	11.4	29	
12	46	11	11.8	30	
13	47	12	12.2	31	

WOMEN'S FOOTWEAR					
USA	EU	UK	IN	CM	
5	35	2.5	8.7	22	
6	36	3.5	9	23	
7	37.5	4.5	9.4	24	
8	38.5	5.5	9.8	25	
9	40	6.5	10.2	26	
10	41.5	7.5	10.6	27	
11	42.5	8.5	11	28	

HELMETS			
SIZE	HAT SIZE	IN	CM
XS	6 3/4	21.3	54
S	6 7/8 - 7	21.7 - 22	55 - 56
M	7 1/8 - 7 1/4	22.4 - 22.8	57 - 58
L	7 3/8 - 7 1/2	23.2 - 23.6	59 - 60
XL	7 5/8 - 7 3/4	24 - 24.4	61 - 62
2XL	7 7/8 - 8	24.8 - 25.2	63 - 64
3XL	8 1/8 - 8 1/4	25.6 - 26	65 - 66
4XL	8 3/8 - 8 1/2	26.4 - 26.8	67 - 68

BELTS		
SIZE	IN	CM
S	30 - 34	76 - 86
M	34 - 38	86 - 96
L	38 - 42	96 - 106
XL	42 - 46	106 - 116
2XL	46 - 50	116 - 126





NEW

PHOENIX JACKET, BROWN

CE

VENTED

A contemporary brown leather riding jacket. Ventilation zips on the sleeves and back keep things cool in warmer temperatures. Contrast stitch detailing features across the sleeves and lower body.

FEATURES

0.8-0.9mm leather shell
Fixed lining
Removable liner- quilted vest
3 exterior & 1 interior pocket
Snap cuffs
V-Twin Fit
CE certified; EU Regulation 2016/425
prEN 17092-4:2018

ADDITIONAL FEATURES

Removable CE protectors in shoulders & elbows (EN 1621-1:2012); action back; antique brass zippers; embossed script logo at back neck; snap down collar; adjustable tabs at waist and hip

XS-3XL

2868917



TALL SIZES

BECKMAN JACKET

CE

VENTED

A timeless leather riding jacket in jet black leather. The self colored stripes and angular panel lines are modern and masculine. Hidden vents help with airflow on warm days and a removable quilted liner offers insulation on cooler rides.

FEATURES

1.0-1.2mm leather shell
Fixed lining- airmesh
Removable liner- quilted vest
Hidden ventilation panels on arms & back
Reflective piping on back
2 exterior & 1 internal pocket
Side adjust zippers & snap wrist cuffs
V-Twin Fit
CE certified; EU Regulation 2016/425
prEN 17092-4:2018

ADDITIONAL FEATURES

Removable CE protectors in shoulders & elbows (EN 1621-1:2012); action back; antique brass zippers; embroidered logo on front; applique & embroidered branding on back; snap down collar

S-5XL, XLT-3XLT

2869635



CLASSIC JACKET 2

CE

VENTED

A true Indian Motorcycle® classic. This timeless style jacket features a slightly worn dark brown leather. Snap down collar stops any flapping when riding. The jacket also features a removable quilted plaid liner for cooler days.

FEATURES

1.2-1.4mm thick leather shell
Fixed lining- plaid
Removable liner- quilted plaid vest
2 exterior, 1 chest & 1 interior pocket
Zippered side expansion panels; snap wrist adjustment tabs
V-Twin Fit
CE certified; Directive 89/686/CE V06.
French Protocol Level 1

ADDITIONAL FEATURES

Removable CE protectors in shoulders & elbows; snap down collar; antique brass zippers; embroidered script logo on front left; applique/embroidered script logo on back; circle headdress patch on right sleeve

S-5XL

2867669



NEW

ATLANTA JACKET

CE

COATED DENIM

An on trend denim jacket that features water resistant fabric and zips. This jacket has protectors that are lightweight, slim, very flexible and highly protective, making them feel almost invisible when worn. It makes the jacket very comfortable, with a slimmer profile shoulder and elbow, but still provides the level of protection as other CE certified protectors.

FEATURES

Unlined, seam sealed
4 exterior pockets
Side adjustment zips; snap cuffs
V-Twin Fit
CE certified; EU Regulation 2016/425
prEN 17092-4:2018

ADDITIONAL FEATURES

Removable CE protectors in shoulders and elbows (EN 1621-1:2012); water resistant zippers; snap collar; woven patch at back neck

XS-3XL

2869726



NEW

SACRAMENTO JACKET

CE

WAXED COTTON

A waxed cotton jacket featuring a slanted left pocket and asymmetric closure. Vents in the sleeves and back allow greater airflow on warmer rides. This has a removable quilted lining and removable protectors.

FEATURES

Fixed lining
Removable liner- quilted vest
3 exterior & 1 interior pocket
Adjustable waist tabs; snap cuffs
V-Twin Fit
CE certified; EU Regulation 2016/425
prEN 17092-4:2018

ADDITIONAL FEATURES

Removable CE protectors in shoulders & elbows (EN 1621-1:2012); gunmetal zippers; snap collar; action back; stitched detailing on back & shoulders; woven patch at back neck

XS-3XL

2868918



FLAT TRACK JACKET

CE

VENTED

A racing inspired jacket featuring colored panels and a removable quilted liner to keep the wearer warm and dry.

FEATURES

Fixed lining- airmesh
Removable liner- quilted vest
2 exterior & 1 interior pocket
Snap cuffs
V-Twin Fit
CE certified; EU Regulation 2016/425
prEN 17092-4:2018

ADDITIONAL FEATURES

Removable CE protectors in shoulders & elbows (EN 1621-1:2012); action back; snap down collar; contrast stripe detailing across sleeves; adjustable side tabs; embroidered & applique branding on front; American flag patch on left sleeve, Motor Oil patch on right sleeve

XS-3XL

2869638



ADVENTURE HELMET
- MATTE STRIPE
PAGE 26





NEW

TALL SIZES

SPRINGFIELD MESH 2 JACKET

CE

MESH

A slick update on the original Springfield Mesh jacket for riding in warmer climates. Mesh panels allow air to flow freely helping the rider stay cool. There are leather powerstretch panels on the elbows for flexibility. A removable lightweight windproof liner offers insulation when temperatures drop.

FEATURES

Fixed lining- airmesh
Windproof removable liner- long sleeve
2 exterior & 2 interior pockets
Powerstretch elbow panels; zip side
adjusters; snap cuff
V-Twin Fit
CE certified; EU Regulation 2016/425
prEN 17092-4:2018

ADDITIONAL FEATURES

Removable CE protectors in shoulders
& elbows (EN 1621-1:2012); action
back; 3M[®] reflective piping; patch
on chest; script logo embroidered &
applique on back; headdress patch on
right sleeve; American flag patch on
left sleeve

S-5XL, XLT-3XLT 2868916



DRIFTER MESH JACKET



MESH

A jacket for warmer days. The mesh panels allow maximum air flow. There are leather panels on the elbows. A removable lightweight windproof liner offers insulation when temperatures drop.

FEATURES

Polyester mesh with leather elbow panels
Fixed lining- airmesh
Windproof removable liner
2 exterior & 1 interior pocket
Side adjustment zips, snap collar & wrists
V-Twin Fit
CE certified; EU Regulation 2016/425
prEN 17092-4:2018

ADDITIONAL FEATURES

Removable CE protectors in shoulders and elbows (EN 1621-1:2012); action back; antique brass snaps; script logo embroidered on chest; embroidered and applique logo on back; headdress patch on right sleeve

S-3XL

2868883



SHADOW MESH JACKET



MESH

This is a full mesh riding jacket. Full mesh construction offers maximum air flow for the hot days. A removable lightweight windproof liner gives insulation for the cold days.

FEATURES

Polyester mesh shell
Fixed lining- airmesh
Windproof removable liner
2 exterior & 1 interior pocket
Side adjustment zips & snap cuffs
V-Twin Fit
CE certified; EU Regulation 2016/425
prEN 17092-4:2018

ADDITIONAL FEATURES

Removable CE protectors in shoulders & elbows (EN 1621-1:2012); action back; antique brass zippers on waist pockets; leather patch on front & back; circle leather patch on right sleeve

S-3XL

2868889



FINAL SEASON

LIGHTWEIGHT MESH JACKET



FINAL SEASON

MESH

Retro styled full mesh riding jacket. Bold branding on back and front demonstrates Indian Motorcycle® as your brand of choice. Full mesh construction offers maximum air flow for the warmest of days. A removable lightweight windproof liner offers insulation on cool mornings.

FEATURES

Fixed lining- airmesh
Windproof removable liner- long sleeve
2 exterior & 1 interior pocket
Zippered side expansion panels; snap cuff
V-Twin Fit
CE certified; EU Regulation 2016/425
prEN 17092-4:2018

ADDITIONAL FEATURES

Removable CE protectors in shoulders & elbows (EN 1621-1:2012); action back; snap fasten collar; script logo embroidered & applique on front; embroidered and applique logo on back; circle headdress patch on right sleeve

S-3XL

2868885



SHIFT JACKET



WAXED COTTON

A modern, utility look waxed cotton jacket with military inspired details around the shoulders, collar and underarms. Secure pocket details on the front add style and practicality.

FEATURES

Fixed lining
Removable liner- quilted vest
4 exterior & 2 interior pockets
Zippered side expansion panels; snap cuffs
V-Twin Fit
CE certified; EU Regulation 2016/425
prEN 17092-4:2018

ADDITIONAL FEATURES

Removable CE protectors in shoulders & elbows; antique brass zippers; hidden snap down collar; action back; leather patch on front; woven patch at back neck

S-5XL

2868996



FLINT JACKET



VENTED

A water resistant jacket featuring contrast colored panels and a removable quilted liner to keep the wearer warm and dry. Ventilation panels allow cooling airflow on warmer days.

FEATURES

Fixed Lining- airmesh
Removable liner- quilted vest
Hidden ventilation panels on arms & back
Reflective piping on back
2 exterior & 1 interior pocket
Side adjust zippers & snap wrist cuffs
V-Twin Fit
CE certified; EU Regulation 2016/425
prEN 17092-4:2018

ADDITIONAL FEATURES

Removable CE protectors in shoulders & elbows (EN 1621-1:2012); action back; embroidered logo on front; applique & embroidered branding on back; snap down collar; circle headdress patch on right sleeve

S-5XL

2869636



NEW

FINAL SEASON

RETRO BOMBER JACKET

FINAL SEASON

CASUAL

This is a vintage style casual jacket with a branded patch on the chest and striped trim details.

FEATURES

Fixed lining
2 exterior & 1 interior pocket
Rib knit collar, cuffs & hem
V-Twin Fit

ADDITIONAL FEATURES

Zip close waist pockets; woven logo patch on chest

XS-3XL

2868919



BOMBER JACKET

CASUAL This is a lightweight casual jacket with large branding on the back.

FEATURES

Fixed lining
3 exterior & 2 interior pockets
Rib knit collar, cuffs & hem
V-Twin Fit

ADDITIONAL FEATURES

Snap close waist pockets; gun metal zips; embroidered logo on front and back; "Since 1901" embroidered on right sleeve

S-5XL

2867631



INDIAN MOTORCYCLE® COLOR BLOCK RAINSUIT - UNISEX

WATERPROOF A two piece jacket and pant rainsuit constructed of waterproof and breathable nylon. Every seam is taped to ensure you stay dry in the rain. Designed to be worn over your leathers this is a large fit. The pant has removable suspenders.

FEATURES

Fixed lining- airmesh
1 interior pocket
Adjustable Velcro® cuffs & waist; stirrups;
full length Velcro® on front opening to
reinforce zip closure
V-Twin Fit

ADDITIONAL FEATURES

100% waterproof &
breathable; reflective piping;
removable suspenders; stows
into self storage bag attached
to jacket lining; branding on
the front, legs & back

XS-5XL

2867447



TALL SIZES

1901 JACKET

CASUAL A lightweight casual jacket with full on cool Indian Motorcycle® branding. Retro chest and sleeve stripes have a vintage race feel.

FEATURES

Fixed lining- airmesh
2 exterior, 2 interior pockets
V-Twin Fit

ADDITIONAL FEATURES

Water resistant & breathable;
snap fasten collar; action back;
embroidered & applique script logo
on front; printed graphic on back;
woven patches on left & right sleeve

S-5XL, XLT-3XLT

2866177





NEW RETRO VEST

WAXED COTTON

A modern styled, waxed cotton vest great for layering over a tee when the weather cools.

FEATURES
Fixed lining
3 exterior & 1 interior pocket
Side adjustment tabs
V-Twin Fit

ADDITIONAL FEATURES
Antique silver snaps, rivets and zippers; embossed leather patch on front; woven patch at back neck

XS-3XL

2869725



OUTSIDER VEST

CASUAL

This black leather vest is a modern classic. It features secure chest pockets with flaps and zip adjustable sides.

FEATURES
0.9-1.0mm thick leather shell
Fixed lining
4 exterior & 1 interior pocket
Zip side expansion panels
V-Twin Fit

ADDITIONAL FEATURES
Antique brass zip; stitch detailing on front; embroidered front logo; applique logo on back

S-5XL

2868674



INDIAN MOTORCYCLE® VEST 2

CASUAL

This black leather vest with laced side seams is a traditional staple for the cruiser rider. The laces can be adjusted to allow expansion where needed. The logos are a combination of embroidery and leather applique.

FEATURES
1.0-1.2mm thick dull leather shell
Fixed lining
2 exterior & 1 interior pocket
V-Twin Fit

ADDITIONAL FEATURES
Antique brass snaps; lace up sides; embroidered front logo; applique & embroidered logo on back

S-5XL

2863711





NEW BLAKE JACKET

CE

VENTED

A soft black leather jacket with stretch side panels and contrast color twin racing stripes across the sleeves. Jacket has modern Indian Motorcycle® branding on the back panel and also features a removable quilted liner for cooler days. This jacket has protectors that are lightweight, slim, very flexible and highly protective, making them feel almost invisible when worn. It makes the jacket very comfortable, with a slimmer profile shoulder and elbow, but still provides the level of protection as other CE certified protectors.

FEATURES

Fixed lining
Removable liner- quilted vest
2 exterior & 1 interior pocket
Adjustable hem tabs; snap cuffs;
stretch side panels
Women's V-Twin Fit
CE certified; EU Regulation 2016/425
prEN 17092-4:2018

ADDITIONAL FEATURES

Removable CE protectors in shoulders & elbows (EN 1621-1:2012); action back; applique & embroidered logo on back; embossed circle headdress logo on hem

XS-3XL

2869723



FINAL SEASON

ADELINE JACKET

FINAL SEASON

CASUAL

A black leather jacket with decorative lace detailing on the back and bold stud detailing that flatters the figure. Laced side-seams allow expansion where needed.

FEATURES

0.55-0.65mm thick leather shell
Fixed lining
2 exterior & 1 interior pocket
Twin snap wrist
Adjustable side lacing
Women's V-Twin Fit

ADDITIONAL FEATURES

Antique brass zip & studs; back lacing; embroidered & applique logo on back; snap collar

XS-3XL

2868914



FINAL SEASON

BESSIE JACKET

FINAL SEASON

CASUAL

A classic black suede casual jacket. This style is timeless with subtle detailing and flatters with a slimmer fit. Modern Indian Motorcycle® branding on the back adds a nice touch.

FEATURES

0.6-0.65mm thick leather suede
Fixed lining
2 exterior & 1 interior pocket
Snap wrist & side tabs
Women's V-Twin Fit

ADDITIONAL FEATURES

Non-riding jacket; action back; antique brass snaps; embroidered logo on back; embossed logo patch on chest; snap collar

XS-3XL

2868915



INDIAN MOTORCYCLE® VEST 2

CASUAL

A traditional staple for cruiser riders. The side laces can be adjusted to allow expansion where needed. The logos are a combination of embroidery and leather applique. Branded rivets decorate the shoulder and back panel.

FEATURES

1.0-1.2mm thick leather shell
Fixed lining
2 exterior & 1 interior pocket
Women's V-Twin Fit

ADDITIONAL FEATURES

Antique brass snaps; lace up sides; embroidered front logo; applique & embroidered logo on back

XS-3XL, 1W-3W

2863716





NEW

SPRINGFIELD MESH 2 JACKET

CE

MESH

A slick update on the original Springfield Mesh jacket for riding in warmer climates. Mesh panels allow air to flow freely, helping the rider stay cool. There are leather powerstretch panels on the elbows for flexibility. A removable lightweight windproof liner offers insulation when temperatures drop.

FEATURES

Fixed lining- airmesh
Windproof removable liner- long sleeve
2 exterior & 2 interior pockets
Powerstretch elbow panels;
zip side panels; snap cuffs
Women's V-Twin Fit
CE certified; EU Regulation 2016/425
prEN 17092-4:2018

ADDITIONAL FEATURES

Removable CE protectors in shoulders & elbows (EN 1621-1:2012); 3M[®] reflective piping; action back; patch on chest; script logo applique & embroidered on back; leather logo patch on back; headdress patch on right sleeve; American flag patch on left sleeve

XS-3XL

2869625



DRIFTER MESH JACKET

CE

MESH

A full mesh riding jacket with bold branding on back. Full mesh construction offers the greatest air flow for hot days. A removable lightweight windproof liner gives insulation in cool temperatures.

FEATURES

Fixed lining- airmesh
Windproof removable liner- long sleeve
2 exterior & 1 interior pocket
Side adjustment zips; zip cuff
Women's V-Twin Fit
CE certified; EU Regulation 2016/425
prEN 17092-4:2018

ADDITIONAL FEATURES

Removable CE protectors in shoulders & elbows (EN 1621-1:2012); snap collar; action back; logo patch on front; applique and embroidered logo on back

XS-3XL

2868884

FINAL SEASON

LIGHTWEIGHT MESH JACKET

CE

FINAL SEASON

MESH

Retro styled full mesh riding jacket. Bold branding on back and front demonstrates Indian Motorcycle[®] as your brand of choice. Full mesh construction offers maximum air flow for the warmest of days. A removable lightweight windproof liner offers insulation for cool mornings.

FEATURES

Fixed lining- airmesh
Windproof removable liner- long sleeve
2 exterior & 2 interior pockets
Side adjustment zips; snap cuff
Women's V-Twin Fit
CE certified; EU Regulation 2016/425
prEN 17092-4:2018

ADDITIONAL FEATURES

Removable CE protectors in shoulders & elbows (EN 1621-1:2012); power stretch action back; snap collar & cuffs; script logo embroidered & applique on front & back; circle headdress patch on right sleeve

XS-3XL

2868886




NEW

BOMBER JACKET

CASUAL

This is a lightweight casual jacket with large branding on the back.

FEATURES

Fixed lining
3 exterior & 2 interior pockets
Rib knit collar, cuffs & hem
Women's V-Twin Fit

ADDITIONAL FEATURES

Snap close waist pockets; gun metal zips; embroidered logo on front and back; since '1901' embroidered on right sleeve

XS-3XL

2860508


NEW

RETRO BOMBER JACKET

CASUAL

This is a vintage style casual jacket with a branded patch on the chest and striped trim details.

FEATURES

Fixed lining
2 exterior & 1 interior pocket
Rib knit collar, cuffs & hem
Women's V-Twin Fit

ADDITIONAL FEATURES

Zip close waist pockets; woven logo patch on chest

XS-3XL

2869626



1901 JACKET

CASUAL

A lightweight casual jacket with slick Indian Motorcycle® branding. Retro chest and sleeve stripes give a polished vintage look.

FEATURES

Fixed lining- airmesh
2 exterior & 2 interior pockets
Snap wrist
Women's V-Twin Fit

ADDITIONAL FEATURES

Water resistant & breathable; snap fasten collar; embroidered & applique logo on front; printed graphic on back; woven patches on sleeves

XS-3XL

2868676

INDIAN MOTORCYCLE® JEANS



Our legends were not written. They were forged. On the dirt, mud, and asphalt of America's roads. In the heat of battle. Under the pressure of competition. On the salt at Bonneville. Since 1901. These are the legends that forged America's first motorcycle company.

Legends are not defined by the stories they tell, but by the stories that are told of them. So while our history matters, it's what we do next that will define us. Legends never follow. Never settle for the road most ridden. And are never satisfied repeating history. Because they demand the opportunity to write it.

The Indian Motorcycle® Company, in collaboration with The Rokker Company®, have crafted a line of motorcycle jeans that deliver the style and comfort that our riders desire, combined with the safety they demand, manufactured using only the highest quality materials.



ORIGINAL JEANS



The Indian Motorcycle® x Rokker® Original Jeans are constructed of heavy duty 13oz medium blue, stonewashed denim with an internal layer of 100% Schoeller®-Dynatec fabric for extreme abrasion resistance. Designed to fit almost everyone, the internal layer of 100% Schoeller®-Dynatec fabric offers extreme abrasion resistance with the added benefit of water repellency and wind-blocking properties to keep you safe and protected from the elements. In addition to the Schoeller®-Dynatec, the Original Jeans are designed to accommodate special D3O® Knee Protectors (sold separately).

FEATURES

- Classic comfort fit (straight cut) with button fly
- Outer material made of finest stonewashed denim (100% cotton)
- Inner material made of 100% Schoeller®-Dynatec (non abrasive, wind resistant, water repellent)
- Protector pockets made of 100% Schoeller®-Dynatec (adjustable with Velcro®)
- Without rivets to prevent scratching the bike
- Easy care (washable at 40°, ironing after wash increases the water repellency)
- Delivered in a premium wooden box
- CE certified. Directive 89/686/EWG Art. 10 with 96/58/EWG

SIZE: WIDTH: 30-40
LENGTH: 32, 34

PART #: 2867680



OPTIONAL KNEE PROTECTORS

The Rokker Company® sells D3O® Knee Protectors separately. Please visit www.therokkerstore.com for more information. Knee Protector product code is ROKKER-d3o-kneeprotectors (2 pieces) with Velcro®, article number 8500.



NEW

MEN'S ROKKERTECH JEAN



The Indian Motorcycle® x Rokker® RokkerTech Jeans are constructed of heavy duty 14oz light washed denim, a single layer denim with high abrasion resistance.

FEATURES

- Slim fit with tapered leg
- Finest 14 oz denim with high abrasion resistant UHMWPE fibers
- Protector pockets on knee and hips for maximum safety with D3O® Knee Protectors
- Without rivets to prevent scratching the bike
- Easy care
- Delivered in a premium wooden box
- CE certified
- Made in Portugal

SIZE: WIDTH: 30-40
LENGTH: 32, 34

PART #: 2869791





NEW

MEN'S ROKKER® CHINO

CASUAL

The Indian Motorcycle® x Rokker® Chinos are constructed of 100% 14oz Schoeller®-Dynatec which is non abrasive, water repellent and wind resistant.

FEATURES

Classic chino (slim fit) with zipper
Outer material made of 100% 14oz Schoeller®-Dynatec (non abrasive, wind resistant, water repellent)
Inner material mesh
Protector pockets made of 100% Schoeller®-Dynatec (adjustable with Velcro® on knee protectors)
Coldblack® finishing technology (reflects heat and UV-rays)
NanoSphere® finishing technology (increases the water and dirt repelling properties)
Without rivets to prevent scratching the bike
Easy care (washable at 40°, ironing after wash increases the water repellency)
Delivered in a premium wooden box



SIZE: WIDTH: 30-40
LENGTH: 32, 34

PART #: 2869792



MEN'S DAYTONA JEANS

CASUAL

The Indian Motorcycle® x Rokker® Daytona Jeans are constructed of finest 13 oz raw selvedge denim made of 100% cotton. Designed to fit almost everyone, the jeans offer a straight cut fit to give you a classic look.

FEATURES

Classic comfort fit (straight cut) with button fly
Made of finest 13 oz. raw selvedge denim (100% cotton)
Indian Motorcycle® leather label on waistband & small leather label on back pocket
Easy care (washable at 40°)
Made in Portugal

SIZE: WIDTH: 29-38
LENGTH: 34

PART #: 286MD



WOMEN'S DIVA JEANS

CASUAL

The Indian Motorcycle® x Rokker® Diva Jeans are constructed of raw stretched denim made of 98% cotton and 2% elastane. Designed to fit almost everyone, the jeans offer a slim fit to give a feminine look.

FEATURES

Slim fit with YKK® zip fly
Made of raw stretch denim (98% cotton, 2% elastane)
Indian Motorcycle® leather label on waistband & small leather label on back pocket
Easy care (washable at 40°)
Made in Portugal

SIZE: WIDTH: 26-31
LENGTH: 34

PART #: 286WD



DRIFTER MESH GLOVE CE

SUMMER Constructed using a combination of mesh, to allow airflow, and leather palm and finger panels. This lightweight glove is easy to wear in warm weather conditions.

FEATURES

Mesh glove with leather palm & wrist
Velcro® wrist closure
Touchscreen leather on fingertip & thumb
Mens CE certified; Directive 89/686/EEC.
EN 13594:2015

S-4XL

2867449



NEW MESH 2 GLOVE CE

SUMMER An update on our popular Mesh Glove. A combination of mesh to allow airflow and leather palm and finger panels construct this glove. The lightweight design offers very little bulk and is easy to wear in warm weather conditions.

FEATURES

Mesh glove with leather palm
Gel padded palm
Velcro® wrist closure
Touchscreen index tip
Mens & Womens CE certified; EU
Regulation 2016/425. EN13594:2015

MEN'S: S-4XL
WOMEN'S: S-XL

2860629
2860630



CINDER GLOVE CE

SUMMER A sporty style glove with contrasting perforated panels, Velcro® closure, and emblem patch. Complements nicely with the Benjamin Jacket.

FEATURES

Full leather construction
Padded palm
Velcro® wrist closure
Touchscreen fingertip & thumb
Mens CE certified; Directive 89/686/EEC.
EN 13594:2015

S-4XL

2868678



SOLO GLOVE



MID SEASON A strong and lightweight glove with hard knuckle protector offers protection and modern style.

FEATURES

Mixed textile & leather construction
Hard knuckle protector
Velcro® wrist closure
Touchscreen fingertip & thumb
Mens CE certified; Directive 89/686/EEC.
EN 13594:2015

S-4XL

2868679



NEW

RETRO 2 GLOVE



MID SEASON An update on our popular Retro Glove. Black leather with Indian Motorcycle® red and cream leather panels. This glove is a perfect match to several of the Indian Motorcycle® jackets. The padded knuckle, double leather contrast palms and cool branding make this a stylish glove.

FEATURES

Full leather construction
Padded knuckles
Velcro® wrist closure
Mens & Womens CE certified; EU
Regulation 2016/425. EN13594:2015

MEN'S: S-4XL

2860627

WOMEN'S: S-XL

2860628



PASSAGE GLOVE



MID SEASON A modern and stylish glove with hard knuckle protector, outer padding and Velcro® strap closure.

FEATURES

Mixed textile & leather construction
Hard knuckle protector
Velcro® wrist closure
Touchscreen index & thumb tips
Mens CE certified; Directive 89/686/EEC.
EN 13594:2015

S-4XL

2868680



NEW

WINTER GLOVE



WINTER A warm insulated glove for winter riding, with hard knuckle protectors. A Velcro® wrist adjuster and draw cord cuff keep the cold out.

FEATURES

Mixed textile & leather construction
Hard knuckle protector
Velcro® wrist closure
Touchscreen index & thumb tips
Men's CE certified; EU Regulation
2016/425. EN13594:2015

S-4XL

2869729



CLASSIC GLOVE



MID SEASON Mid season, classic black leather glove. Simple styling with double leather panels, perforated leather finger panels and Velcro® closure.

FEATURES

Full leather construction
Perforated inner finger panels
Exposed seam construction with double leather panel on palms
Velcro® wrist closure
Men's and Women's certified EU
Regulation 2016/425 EN13594:2015

MEN'S: S-4XL

2869717

WOMEN'S: S-XL

2869718





NEW

ADVENTURE HELMET- MATTE STRIPE

FEATURES

Matte finish
100% fiberglass outer shell; EPS inner shell
Fixed lining
Weight: 1250g
Safety: DOT certified; ECE certified

ADDITIONAL FEATURES

Detachable cheek pads & sun peak;
D-ring closure; goggle fastener at back;
Bluetooth® compatible

XS-2XL

2869727



NEW

ADVENTURE HELMET - GLOSS BLACK

FEATURES

Glossy finish
100% fiberglass outer shell; EPS inner shell
Fixed lining
Weight: 1250g
Safety: DOT certified; ECE certified

ADDITIONAL FEATURES

Detachable cheek pads & sun peak;
D-ring closure; goggle fastener at back;
Bluetooth® compatible

XS-2XL

2869728



ROUTE MODULAR HELMET

FEATURES

Matte finish
70% polycarbonate, 30% ABS outer shell;
EPS inner shell
Removable, washable cheek pads
Weight: 1600g
Safety: DOT certified; ECE certified

ADDITIONAL FEATURES

Anti-fog Pinlock® 30; top & rear vents; inner
sun visor; Bluetooth® compatible

XS-2XL

2867637





OUTPOST HELMET

FEATURES

Glossy ABS outer shell; EPS inner shell
Removable, washable lining
Weight: 1550g
Safety: DOT certified; ECE certified

ADDITIONAL FEATURES

Anti-fog Pinlock® 30, anti-scratch shield coatings; chin, top & rear vents; Bluetooth® compatible

XS-2XL 2868682



FREEWAY HELMET

FEATURES

Matte ABS outer shell; EPS inner shell
Removable, washable lining
Weight: 1450g
Safety: DOT certified; ECE certified

ADDITIONAL FEATURES

Anti-fog Pinlock® 30, anti-scratch shield coatings; chin & top vents; Bluetooth® compatible, inner sun visor

XS-2XL 2867453



LIBERTY JET HELMET

FEATURES

Matte ABS outer shell; EPS inner shell
Removable, washable lining
Weight: 1250g
Safety: DOT certified; ECE certified

ADDITIONAL FEATURES

Anti-scratch visor; top & rear vents; inner sun visor; Bluetooth® compatible

XS-2XL 2867454



NEW

ADVENTURE HELMET SUNPEAK

Only works with the following helmets, 2869727 & 2869728.

ONE SIZE
MATTE STRIPE 2869793
WHITE 2869794



ROUTE MODULAR HELMET VISOR

ONE SIZE 2867643



FREEWAY FULL FACE HELMET VISOR

ONE SIZE 2867460



LIBERTY JET HELMET VISOR

ONE SIZE 2867461



RETRO FULL FACE HELMET VISOR

Only works with the following full face helmets, 2868683 & 2869630.

ONE SIZE
GRAY 2868890
CLEAR 2868829

NEW

MATTE STRIPE FULL FACE HELMET

FEATURES

UV lacquer finish
100% fiberglass outer shell; EPS inner shell
Fixed inner lining
Weight: 1450g
Safety: DOT certified; ECE certified

ADDITIONAL FEATURES

Anti-fog Pinlock® 30, anti-scratch shield coatings; detachable cheek pads; D-ring closure; Bluetooth® compatible

XS-2XL

2869630

RETRO FULL FACE HELMET

FEATURES

Glossy, UV lacquer finish
100% fiberglass outer shell; EPS inner shell
Fixed inner lining
Weight: 1450g
Safety: DOT certified; ECE certified

ADDITIONAL FEATURES

Anti-fog Pinlock® 30, anti-scratch shield coatings; detachable cheek pads; quick release chin strap; Bluetooth® compatible

XS-2XL

2868683

BIG SIZES

RETRO OPEN FACE HELMET, RED

FEATURES

Glossy UV lacquer finish
100% fiberglass outer shell; EPS inner shell
Fixed lining
Weight: 1150g
Safety: DOT certified; ECE certified

ADDITIONAL FEATURES

Detachable sunpeak & cheek pads;
D ring closure; goggle fastener at back;
Bluetooth® compatible; Chrome piping

XS-4XL

2868872





BIG SIZES

RETRO OPEN FACE HELMET, BLACK

FEATURES

Glossy UV lacquer finish
100% fiberglass outer shell; EPS inner shell
Fixed lining
Weight: 1150g
Safety: DOT certified; ECE certified

ADDITIONAL FEATURES

Detachable sunpeak & cheek pads;
D-ring closure; goggle fastener at back;
Bluetooth® compatible; Chrome piping

XS-4XL

2868870



BIG SIZES

RETRO OPEN FACE HELMET, MATTE BLACK

FEATURES

Matte UV lacquer finish
100% fiberglass outer shell; EPS inner shell
Fixed lining
Weight: 1150g
Safety: DOT certified; ECE certified

ADDITIONAL FEATURES

Detachable sunpeak & cheek pads; D-ring closure;
goggle fastener at back; Bluetooth® compatible

XS-4XL

2868869



BIG SIZES

RETRO OPEN FACE HELMET, SILVER

FEATURES

Glossy UV lacquer finish
100% fiberglass outer shell; EPS inner shell
Fixed lining
Weight: 1150g
Safety: DOT certified; ECE certified

ADDITIONAL FEATURES

Detachable sunpeak & cheek pads;
D-ring closure; goggle fastener at back;
Bluetooth® compatible

XS-4XL

2868871



NEW

BIG SIZES

CARBON OPEN FACE HELMET

FEATURES

Matte UV lacquer finish
100% carbon fiber outer shell; EPS inner shell
Fixed lining
Weight: 1050g
Safety: DOT certified; ECE certified

ADDITIONAL FEATURES

Detachable sunpeak & cheek pads;
D-ring closure; goggle fastener at back;
Bluetooth® compatible

XS-4XL

2869633



NEW

BIG SIZES

OPEN FACE HELMET - WHITE STRIPE

FEATURES

Glossy UV lacquer finish
100% fiberglass outer shell; EPS inner shell
Fixed lining
Weight: 1150g
Safety: DOT certified; ECE certified

ADDITIONAL FEATURES

Detachable sunpeak & cheek pads;
D-ring closure; goggle fastener at back;
Bluetooth® compatible

XS-4XL

2869628



NEW

BIG SIZES

OPEN FACE HELMET - MATTE STRIPE

FEATURES

Matte UV lacquer finish
100% fiberglass outer shell; EPS inner shell
Fixed lining
Weight: 1150g
Safety: DOT certified; ECE certified

ADDITIONAL FEATURES

Detachable sunpeak & cheek pads;
D-ring closure; goggle fastener at back;
Bluetooth® compatible

XS-4XL

2869629



LIFESTYLE SUNGLASSES

PAGE 64



SHADOW SUNGLASSES

PAGE 63



BIG SIZES

TWO TONE OPEN FACE HELMET

FEATURES

Glossy UV lacquer finish
100% fiberglass outer shell; EPS inner shell
Fixed lining
Weight: 1150g
Safety: DOT certified; ECE certified

ADDITIONAL FEATURES

Detachable sunpeak & cheek pads;
D-ring closure; goggle fastener at back;
Bluetooth® compatible; Chrome piping

XS-4XL 2868897



BIG SIZES

SCOUT® OPEN FACE HELMET

FEATURES

Glossy UV lacquer finish
100% fiberglass outer shell; EPS inner shell
Fixed lining
Weight: 1150g
Safety: DOT certified; ECE certified

ADDITIONAL FEATURES

Detachable sunpeak & cheek pads;
D-ring closure; goggle fastener at back;
Bluetooth® compatible; Chrome piping

XS-4XL 2868895



BIG SIZES

RETRO OPEN FACE HELMET, WHITE

FEATURES

Glossy UV lacquer finish
100% fiberglass outer shell; EPS inner shell
Fixed lining
Weight: 1150g
Safety: DOT certified; ECE certified

ADDITIONAL FEATURES

Detachable sunpeak & cheek pads;
D-ring closure; goggle fastener at back;
Bluetooth® compatible

XS-4XL 2868684


RETRO OPEN FACE HELMET
SUN PEAK

Only works with the following open face helmets: 2868684, 2868869, 2868870, 2868871, 2868872, 2868897, 2868895, 2869628, 2869633 & 2869629.

ONE SIZE 2868830



OPEN FACE HELMET SUN PEAK

Only works with the following helmets: 2868681, 2866199 & 2866310.

ONE SIZE 2863849

PINLOCK® 30 FOG RESISTANT
INSERT LENS - CLEAR (NOT PICTURED)

ONE SIZE 2867462





MEN'S SNEAKER - BLACK



This sneaker provides a stable fit and protection. The Vibram® sole provides grip and abrasion resistance. The premium cow leather, antique silver eyelets and pinstripe design make this sneaker a favorite for riding and around town.

FEATURES

1.4-1.5mm thick durable cow leather
Gusset tongue keeps out sand & water
Antibacterial microfiber insock & mesh lining
Ankle protector, toe cap & heel cup
Gear shift pad
Includes black & red waxy shoe laces
CE certified. Personal Protective Equipment
Regulation 2016/425; EN 13634:2017

SIZE: 7-13 2867689



NEW

MEN'S SOCKS 2 PACK

Multi pack of branded Indian Motorcycle® socks. Each pack includes two pairs with different graphics. Socks have script logo and contrast stripes.

ONE SIZE (US 7-13) 2869777



MEN'S CLASSIC MOC - BROWN



This 8-inch lifestyle moccasin boot is developed to provide a stable fit and protection with an ecru Vibram® sole. The premium cow leather, antique brass eyelets and all brown stitching make these boots a favorite for riding and being seen around town.

FEATURES

1.4-1.5mm thick durable cow leather
Gusset tongue & zipper keep out sand & water
Goodyear welt construction, repairable outsole construction
Antibacterial microfiber insock & mesh lining
Ankle protector, toe cap & heel cup
Gear shift pad
Includes brown & ecru waxy shoe laces
CE certified. Personal Protective Equipment
Regulation 2016/425; EN 13634:2017

SIZE: 7-13 2867691



MEN'S SOCKS 3 PACK

Multi pack of branded Indian Motorcycle® socks. Each pack includes three colors; black, gray and navy.

ONE SIZE (US 7-13) 2868691



WHAT IS A GOODYEAR WELT?

The Goodyear welting machine, invented in 1869, attaches the sole to a strip of leather, or welt, that runs around the outside of the shoe rather than the lining. Welting is a manual and time-consuming process, but results in a more waterproof and longer lasting shoe.

NEED A REPAIR?

Nu Shoe® is the official cobbler for all Vibram® sole replacements.

www.nushoe.com/indian-boot-repair
Toll free number: 1-877-687-4631



MEN'S ENGINEER - BLACK



This 7.5-inch boot is an iconic short Engineer style with burnish suede back panel. It features an internal YKK® zipper for easy pull-on and a Vibram® sole to provide grip and abrasion resistance. The premium cow leather, original Indian Motorcycle® buckles and all black stitching will have you riding in style.

FEATURES

- 1.4-1.5mm thick durable cow leather
- Strap & elastic gusset to adjust the fitting
- Antibacterial microfiber insock & mesh lining
- Ankle protector, toe cap & heel cup
- Goodyear welt construction
- Repairable outsole construction
- Gusset zipper keeps out sand & water
- CE certified. Personal Protective Equipment Regulation 2016/425; EN 13634:2017

SIZE: 7-13

2867690



MEN'S CLASSIC LACE UP - BLACK



This 8-inch classic lace up boot is developed to provide a stable fit and protection, it has a Vibram® sole to provide grip and abrasion resistance. The premium cow leather, antique silver eyelets and all black stitching make these boots a favorite for riding and being seen around town.

FEATURES

- 1.4-1.5mm thick durable cow leather
- Gusset tongue keeps out sand & water
- Goodyear welt construction
- Repairable outsole construction
- Antibacterial microfiber insock & mesh lining
- Ankle protector, toe cap & heel cup
- Certified slip resistance outsole
- Internal YKK® zipper for easy pull-on
- Includes black & mix combo colored waxy shoe laces
- CE certified. Personal Protective Equipment Regulation 2016/425; EN 13634:2017

SIZE: 7-13

2867688



WOMEN'S SHORT ENGINEER - BLACK



This 8-inch boot is a professional short Engineer style with burnish suede back panel. It features an internal YKK® zipper for easy pull-on. The premium cow leather, original Indian Motorcycle® buckles, embossed logo and all black stitching will have you riding in style.

FEATURES

- 1.4-1.5mm thick durable cow leather
- Strap & elastic gusset to adjust the fitting
- Antibacterial microfiber insock & mesh lining
- Ankle protector, toe cap & heel cup
- Gear shift pad
- Goodyear welt construction
- Repairable outsole construction
- Gusset zipper keeps out sand & water
- CE certified. Personal Protective Equipment Regulation 2016/425; EN 13634:2017

SIZE: 5-11

2867692



WOMEN'S TALL ENGINEER - BROWN

CASUAL

This 13-inch boot is a casual tall Engineer style with burnish suede back panel. It features an internal YKK® zipper an easy opening, with heeled wooden sole and an elastic gusset to adjust the fitting.

FEATURES

- 1.4-1.5mm thick durable cow leather
- Strap & elastic gusset to adjust the fitting
- Antibacterial microfiber insock & mesh lining
- Goodyear welt construction
- Repairable outsole construction
- Gusset zipper keeps out sand & water

SIZE: 5-11

2863964



MEN'S WORTHINGTON BOOT

CASUAL

This boot is based on Red Wing Shoes® classic Engineer style and has been modified for Indian Motorcycle® riders. This 11-inch pull-on boot features plain toe styling, a Vibram® 430 sole to provide higher grip and abrasion resistance and an instep strap to adjust the fitting. The premium Red Wing Shoes® Black Harness leather, original Indian Motorcycle® buckles, embossed logo and all black stitching will have you riding in style. These boots feature Goodyear welt construction and puritan chain stitching.



MADE IN
★ ★ ★ ★ ★
U.S.A.
★ ★ ★ ★ ★

FEATURES

2.0-2.2mm thick durable Red Wing® work boots leather
Instep strap to adjust the fitting
Leather insole
Traditional Engineer style from 1930s
Original Indian Motorcycle® logo buckles
Goodyear welt construction, repairable outsole construction

SIZE: 7-13

2864411



MEN'S SPIRIT LAKE BOOT

CASUAL

This boot is based on Red Wing Shoes® popular Iron Ranger and has been modified for Indian Motorcycle® riders. It is an 8-inch boot developed to provide a stable fit and ankle protection, has a Vibram® 430 sole to provide higher grip and abrasion resistance and features a double layer leather toe cap for protection. The premium Red Wing Shoes® Amber Portage leather, gunmetal eyelets and all brown stitching make these boots a favorite for riding and being seen around town. These boots feature Goodyear welt construction and triple stitched quality.



MADE IN
★ ★ ★ ★ ★
U.S.A.
★ ★ ★ ★ ★

FEATURES

2.0-2.2mm thick durable Red Wing® work boots leather
Double layer capped toe to protect the toe area
Gusset tongue to prevent sand or water from getting into the boots
Leather insole
Goodyear welt construction, repairable outsole construction

SIZE: 7-13

2864412



MEN'S SNEAKER
PAGE 33







SHIELD 1200 TEE
PAGE 39

MUSCLE SHIELD TANK
PAGE 59

FASHION FIT TEES

These tees fit closer to the body than other styles, with a slimmer chest, waist and shoulder, giving a comfortable and sleek silhouette. Reference the size chart on page 5 for more details on the fit.



NEW

FTR FRONT TEE

Celebrate the excitement of the American Flat Track™ by proudly wearing the iconic FTR™ 1200 bike.

Fabric: 100% cotton single jersey
Graphics: Large hand drawn illustration on front; small hand painted logo on back neck
Fit: Men's Fashion Fit T-Shirt

S-3XL

2869732



NEW

FTR BIKE SKETCH TEE

Celebrate the excitement of the American Flat Track™ by proudly wearing the iconic FTR™ 1200 bike.

Fabric: 100% cotton single jersey
Graphics: Large hand drawn illustration on front; small hand painted logo on back neck
Fit: Men's Fashion Fit T-Shirt

S-3XL

2869731



NEW

ADVENTURE TEES

These tees come in a more fashionable fit than our other tees and celebrate the energy of the American Flat Track™.

Fabric: 100% cotton single jersey
Graphics: Large graphic on front; small hand painted logo on back neck
Fit: Men's Fashion Fit T-Shirt

S-3XL

ANTIQUE WHITE
 GRAY

2869687
 2869688



FTR™ 1200 LOGO TEE

Celebrate the excitement and energy of the American Flat Track™ with these 1200 tees.

Fabric: 100% cotton single jersey
Graphics: Large logo on front; small print at back neck
Fit: Men's Fashion Fit T-Shirt

S-3XL

BLACK
 ECRU

2868965
 2868966

**NEW****SHIELD CAMO TEE**

This black tee is made using a raised puff print on a camouflage shield logo.

Fabric: 100% cotton single jersey
Graphics: Large puff print on front; small print on back

S-3XL **2869684**

**NEW****SHIELD 1200 TEES**

These simple tees come in a more fashionable fit than our other tees and feature a small printed chest and back neck logo.

Fabric: 100% cotton single jersey
Graphics: Small shield logo on front; small hand painted logo on back neck
Fit: Men's Fashion Fit T-Shirt

S-3XL
BLACK **2869690**
ANTIQUE WHITE **2869691**

**NEW****HAND PAINTED TEES**

These tees come in a more fashionable fit than our other tees and feature an Indian Motorcycle® graphic print across the front, in a hand painted style.

Fabric: 100% cotton single jersey
Graphics: Large hand painted graphic on front; small hand painted logo on back neck
Fit: Men's Fashion Fit T-Shirt

S-3XL
NAVY **2869682**
RED **2869685**

**NEW****LONG SLEEVE SHIELD LOGO TEE**

A soft lightweight cotton tee in our signature Indian Motorcycle® red features the Indian Motorcycle® logo on the chest and sleeve.

Fabric: 100% cotton single jersey
Graphics: Small print on chest; large print on sleeve; small headdress print on back
Fit: Men's Fashion Fit T-Shirt

S-3XL **2869706**

**UV RACING TEE**

Celebrate the excitement and energy of the American Flat Track™ with this racing style tee. This long sleeved tee uses a bamboo charcoal coating to offer UV protection SPF50, along with thermal control, dry fast, and high wicking properties, to keep you cool and dry on summer rides.

Fabric: 100% polyester
Graphics: Small FTR™ 1200 logo on chest; large logo on back; logo on left sleeve; thumb holes at cuff

S-3XL **2868970**

**CHECKERED TEE**

This long sleeved black tee features a checkered sleeve with distressed print. The tee has a vintage wash to give it a softer, more relaxed feel.

Fabric: 100% cotton single jersey
Graphics: Large script logo on front; small logo print on back neck
Fit: Men's Fashion Fit T-Shirt

S-3XL **2868962**




NEW

1901 BONNEVILLE TEE

This antique white tee comes in a more fashionable fit than our other tees. This tee celebrates the record breaking achievement of Burt Munro with a large hand drawn illustration featuring the Scout® Streamliner.

Fabric: 100% cotton single jersey

Graphics: Large hand drawn illustration on front

Fit: Men's Fashion Fit T-Shirt

S-3XL
2869746

NEW

1901 SALT FLATS TEE

This port tee comes in a more fashionable fit than our other tees. This tee celebrates the record breaking achievement of Burt Munro at the Bonneville salt flats.

Fabric: 100% cotton single jersey

Graphics: Large hand drawn illustration on front

Fit: Men's Fashion Fit T-Shirt

S-3XL
2869747

NEW

1901 MUNRO TEE

This charcoal tee comes in a more fashionable fit than our other tees. This tee celebrates the special record breaking achievement of Burt Munro.

Fabric: 100% cotton single jersey

Graphics: Large hand drawn illustration on front

Fit: Men's Fashion Fit T-Shirt

S-3XL
2869748

NEW

1901 MUNRO SPECIAL TEE

This gray marl tee comes in a more fashionable fit than our other tees. This tee celebrates the special record breaking achievement of Burt Munro.

Fabric: 100% cotton single jersey

Graphics: Large hand drawn illustration on front

Fit: Men's Fashion Fit T-Shirt

S-3XL
2869749



NEW

WRECKING CREW TEE

Celebrate the talent and winning legacy of the Indian Motorcycle Wrecking Crew™ with this logo tee.

Fabric: 100% cotton single jersey

Graphics: Large print on chest, back and sleeves

S-3XL

2869743



NEW

LONG SLEEVE WRECKING CREW TEE

Celebrate the talent and winning legacy of the Indian Motorcycle Wrecking Crew™ with this logo tee. This tee features 2 in 1 sleeves, with a contrasting long sleeve under the short sleeve for a layered look.

Fabric: 100% cotton single jersey

Graphics: Large print on chest, back and sleeves; patch on right sleeve

S-3XL

2869744



NEW MONTAGE TEE

Inspired by the historic evolution of Indian Motorcycle® you can now wear a piece of history with this montage of classic motorcycles.

Fabric: 100% cotton single jersey
Graphics: Small print on front chest; large print on back; woven patch on right sleeve

S-3XL 2869733



NEW RED MARL TEE

This Indian Motorcycle® short sleeve tee is made in a flattering red marl cotton, a simple tee which features a large Indian Motorcycle® icon print in a soft discharge ink is a classic piece for any Indian Motorcycle® enthusiast.

Fabric: 100% cotton single jersey
Graphics: Large distressed graphic on front; woven patch on right sleeve

S-3XL 2869657



NEW BLOCK TEE

This fresh and stylish short sleeve tee features the Indian Motorcycle® block logo with matching signature chainstitching at the back neck.

Fabric: 100% cotton single jersey
Graphics: Large logo on front; small logo on back neck

S-3XL 2869658



NEW PORT MARL POCKET TEE

This versatile port marl tee features a large distressed graphic print across the back. The Indian Motorcycle® logo is printed directly above a single pocket on the chest.

Fabric: 100% cotton single jersey
Graphics: Large distressed logo print on front; small logo on back neck; woven patch on right sleeve

S-3XL 2869659



NEW COLOR HEADDRESS TEE

Celebrate the Indian Motorcycle® brand with this hand painted, full color headdress print.

Fabric: 100% cotton single jersey
Graphics: Large hand painted logo on front; small logo on back neck; woven patch on right sleeve

S-5XL 2869660



NEW ICON LOGO TEE

This fresh, antique white short sleeved tee features a signature Indian Motorcycle® headdress icon across the chest in a distressed waterbased print.

Fabric: 100% cotton single jersey
Graphics: Large headdress logo on front; small logo print on back neck; woven patch on right sleeve

S-5XL 2869661



LOGO TEES

Indian Motorcycle® logo tees are made with 100% pima cotton (excluding gray marl tee) which is a superior cotton. The logos are printed with discharge and water based inks for a soft feel.

Fabric: 100% cotton single jersey
Graphics: Distressed Indian Motorcycle® logo on front; woven patch on right sleeve

S-5XL	
RED	2868807
ANTIQUE WHITE	2867945
ECRU (BLACK TEE)	2863317
GRAY MARL <small>// FINAL SEASON</small>	2863810



MOTORCYCLE RACING TEE

A black tee featuring a large Indian Motorcycle® racing logo across the back, and a small logo at the front chest.

Fabric: 100% cotton single jersey
Graphics: Small logo print on front; large distressed racing logo print on back; woven patch on right sleeve

S-3XL 2867562



NEW

SLEEVELESS QUICK DRY TEE

This tank offers UV protection SPF50, quick dry and high wicking properties to keep you cool and dry on summer rides.

Fabric: 100% polyester
Graphics: Small logo on front & back neck

S-3XL 2869656



NEW

QUICK DRY LOGO TEE

This short sleeved tee offers UV protection SPF50, quick dry and high wicking properties to keep you cool and dry on summer rides.

Fabric: 100% polyester
Graphics: Large logo on front; small logo on back neck

S-3XL 2869665


NEW

CHARCOAL MARL TEE

This tee is made in a soft charcoal marl jersey and features a large front graphic print in a subtle mustard color adding a hint of color to a classic style.

Fabric: 100% cotton single jersey

Graphics: Large graphic on front; small script logo on neck; woven patch on right sleeve

S-3XL
2869664

NEW

LONG SLEEVE LOGO TEE, NAVY

This timeless navy tee proudly displays the Indian Motorcycle® script logo. Printed using an antique white discharge ink for a soft feel.

Fabric: 100% cotton single jersey

Graphics: Large logo on front; small logo on back neck; "Since 1901" embroidery at back hem; woven patch on right sleeve

S-5XL
2869662

NEW

RAGLAN TEE

Made in a soft slub jersey, this contrast raglan sleeve tee in moss gray and charcoal will be a casual staple during the upcoming weather transition months.

Fabric: 100% cotton slub jersey

Graphics: Large graphic on front small logo print on back neck; woven patch on right sleeve

S-3XL
2869663


UV PROTECT HEADDRESS TEE

This long sleeve tee uses a bamboo charcoal coating to offer UV protection SPF50, along with thermal control, dry fast and high wicking properties, to keep you cool and dry on those summer rides.

Fabric: 100% polyester

Graphics: Headdress logo on front, icon logo at back neck, script logo on both sleeves; thumb holes at cuff

S-3XL
2868924


LONG SLEEVE LOGO TEE

A classic and simple long sleeve logo tee, in black cotton slub with a large Indian Motorcycle® logo printed on the front in a distressed discharge print, and a small logo at the back neck.

Fabric: 100% cotton slub jersey

Graphics: Distressed Indian Motorcycle® logo on front & back neck; "1901" embroidery at back hem; woven patch on right sleeve

S-5XL
2866270


LONG SLEEVE HEADDRESS TEE

This tee features 2 in 1 sleeves, with a contrasting long sleeve under the short sleeve for a layered look. The Indian Motorcycle® headdress is printed in full color across the front.

Fabric: 100% cotton slub jersey

Graphics: Large distressed headdress print on front; small logo print on back; "Since 1901" embroidered on back hem; woven patch on right sleeve

S-3XL
2868808



NEW

LOGO HOODIE

This pullover hoodie is made in a heavy, textured grindle brushback fabric for added warmth. Featuring a full color embroidered headress on the reverse, embroidered Indian Motorcycle® at the front and contrast stitching throughout.

Fabric: 70% cotton, 30% polyester

Graphics: Embroidered logo on front & back

Additional Features: Two hand warmer pockets; drawstring hood

S-3XL

2869734



NEW

WRECKING CREW STRIPE SWEAT

Celebrate the talent and winning legacy of the Indian Motorcycle® Wrecking Crew™ with this logo sweat.

Fabric: 100% cotton loopback

Graphics: Small print on chest; large print on back

S-3XL

2869745



IMC HOODIE

This pullover hoodie is made in a heavy brush-backed fabric for added warmth. The front features the Indian Motorcycle® logo in applique, while the back features a large embroidered Indian Motorcycle® icon.

Fabric: 70% cotton, 30% polyester fleeceback

Graphics: Embroidered logo on front & back

Additional Features: Two hand warmer pockets; drawstring hood; contrasting stitching

S-3XL

2863697



CHECKERED HOODIE

Celebrate the excitement and energy of the American Flat Track™ with this vintage black hoodie featuring a checkered hood lining.

Fabric: 100% cotton loopback

Graphics: Small script logo on front; large embroidered logo on back; print on right sleeve

Fit: Men's Fashion Fit

S-3XL

2868971



NEW

ICON HOODIE

This contrast gray marl and black zip thru hoodie is made in a soft, cotton blend with handwarmer pockets to keep hands cosy, perfect for layering over your favorite tees.

Fabric: 70% cotton, 30% polyester loopback

Graphics: Small print on front; large print on back

Additional Features: Two hand warmer pockets with snap closure; drawstring hood

S-3XL

2869666



NEW

CHARCOAL LOGO SWEAT

This classic charcoal marl sweat features the Indian Motorcycle® block logo across the front in a white chainstitching embroidery.

Fabric: 70% cotton, 30% polyester loopback

Graphics: Large embroidery on front; small embroidery on back neck; "Since 1901" embroidered on back hem; leather patch on right sleeve

S-3XL

2869790



NEW

BLOCK LOGO SWEAT

This classic port marl sweat features the Indian Motorcycle® block logo across the front in a white chainstitching embroidery.

Fabric: 70% cotton, 30% polyester loopback

Graphics: Large embroidery on front; small embroidery on back neck; "Since 1901" embroidered on back hem; leather patch on right sleeve

S-3XL

2869667



FINAL SEASON

LOGO SWEAT

FINAL SEASON

This classic navy sweat features subtle Indian Motorcycle® branding across the front in navy applique and embroidery. A small embroidery is placed at the back neck.

Fabric: 100% cotton

Graphics: Large embroidered logo on front; embroidery on back neck; "Since 1901" embroidery at back hem; leather patch on right sleeve

S-3XL

2868929



NEW

THERMO UNDERVEST

Layering up is the key to a warm core. This lightweight vest can be worn under a jacket or on its own.

Fabric: 100% nylon with 100% polyester filling
Graphics: Small print on front & back
Additional Features: Two hand warmer pockets with zippers; zip chest pocket

S-3XL

2869742



NEW

COLOR BLOCK ZIP THRU

Made with a warm brushback fabric, this classic zip thru is a perfect way to layer up and take you through the upcoming transitioning months.

Fabric: 70% cotton, 30% polyester
Graphics: Small print on front; large print on back
Additional Features: Two hand warmer pockets with zippers

S-5XL

2869735



FINAL SEASON

IMC CONTRAST ZIP THRU

FINAL SEASON

This contrasting zip-thru comes in light gray and dark gray marl. It features a large applique/embroidery on the back in antique white, and a small embroidery at the front chest. Branded zip pulls are used, along with a leather-look patch at the front hem.

Fabric: 70% cotton, 30% polyester loopback
Graphics: Small embroidered logo on chest, large embroidered print on back; leather-look patch on front hem; embroidered patch on right sleeve

S-3XL

2867566



LOGO QTR ZIP KNIT

This quarter zip knit comes in a dark gray marl, and uses Indian Motorcycle® branding on the front in black chain embroidery, for a subtle look.

Fabric: 100% cotton knit

Graphics: Large embroidered logo on front; "Single 1901" embroidered on back neck; leather-look patch on right sleeve

S-3XL

2867580



NEW

BLOCK LOGO KNIT

This signature jacquard knit comes in a deep navy with the Indian Motorcycle® block logo on the front.

Fabric: 100% cotton knit

Graphics: Large logo on front; small embroidery on back neck; "Since 1901" embroidery at back hem; leather patch on right sleeve

S-3XL

2869668



ICON QTR ZIP FLEECE

This black quarter zip fleece is made in a warm and soft fleece which retains heat, perfect for that added layer on a ride. The fleece also has 3M® reflective piping at the front, back and shoulder seams for extra visibility.

Fabric: 100% polyester fleece

Graphics: Embroidered logo on front & back

S-3XL

2868928



RED BLACK PLAID SHIRT

This lightweight long sleeve black and red shirt features an all over woven plaid, chest pocket and a button fastening. The plaid shirt is finished with a large embroidered Indian Motorcycle® script logo at the back and a patch at the front pocket and front hem.

Fabric: 100% brushed cotton
Graphics: Leather-look patches at front hem & chest pocket; embroidered logo on back

S-3XL 2868931



GRAY BLACK PLAID SHIRT

This lightweight long sleeve black and gray shirt features an all over woven plaid, twin chest pockets and a button fastening. The plaid shirt is finished with a small embroidered "Since 1901" at the back neck, chest embroidery, and front hem patch.

Fabric: 100% cotton
Graphics: Leather-look patch at front hem; embroidered logo on front

S-3XL 2868932



BLACK PLAID SHIRT

This heavyweight long sleeve black shirt features an all over woven plaid, chest pocket and a button fastener closure. The plaid shirt features a large embroidered Indian Motorcycle® headaddress icon logo on the back and a patch at the front pocket and front hem.

Fabric: 100% brushed cotton
Graphics: Leather-look patches at front hem & chest pocket; embroidered logo on back; "Since 1901" embroidery at back hem

S-3XL 2868933



NAVY PLAID SHIRT

This soft plaid shirt features two front pockets, embroidered Indian Motorcycle® logo at the back neck and leather-look patches applied to the front pocket and hem. The buttons at the front fastening, pockets, and cuffs are all branded.

Fabric: 100% cotton
Graphics: Embroidered logo at back neck; embroidered and applique logo on back; two leather-look patches on front; branded buttons; "Since 1901" embroidery at back hem

S-3XL 2867586



WASHED TWILL SHIRT

Washed to create a worn-in look, this lightweight twill shirt boasts twin chest pockets and a felt and rubber patch at the center back, bringing a heritage feel to a classic design.

Fabric: 100% cotton twill
Graphics: Leather-look patch on front pocket & hem; rubber/felt patch on back neck; "Since 1901" embroidery at back hem

S-3XL 2868930



RED PLAID SHIRT

This soft plaid shirt features two front pockets, embroidered Indian Motorcycle® branding at the back neck and a leather-look patch applied to the front hem. The buttons at the front fastening, pockets, and cuffs are all branded.

Fabric: 100% cotton plaid
Graphics: Embroidered logo on back and front; leather-look patch on front; branded buttons

S-3XL 2868821


NEW

SLEEVELESS DENIM SHIRT

This twin pocket sleeveless denim shirt is made using an enzyme wash and a sandblasted finish to create a worn, vintage look.

Fabric: 100% cotton
Graphics: Small embroidery on front; large print on back; snap down collar

S-5XL 2869737


NEW

WASHED DENIM SHIRT

This twin pocket denim shirt is made using an enzyme wash and a sandblasted finish to create a worn, vintage look.

Fabric: 100% cotton
Graphics: Small embroidery on front; large print on back; snap down collar

S-3XL 2869738


NEW

SHOP SHIRT, BLACK

This classic button up shop shirt features a large chest print with stylish matching sleeve stripes and a mesh panel at the underarm to keep you cool and comfortable.

Fabric: 65% polyester, 35% cotton
Graphics: Large print on front and back; snap down collar

S-5XL 2869740



CASUAL SHIRT

Basic black with lots of style points including metal buttons on pockets and epaulets on this pit shirt.

Fabric: 65% polyester, 35% cotton
Graphics: Embroidered Indian Motorcycle® logo on front & back; woven patches on sleeves

S-5XL 2863698



SHOP SHIRT, RED

This shop shirt comes in a lightweight cotton, to keep you cool and comfortable. It features a large Indian Motorcycle® print at the back, and patches on both sleeves.

Fabric: 100% cotton
Graphics: Embroidered logo on front; printed logo on back; woven patches on sleeves

S-3XL 2867952



SHOP SHIRT, ANTIQUE WHITE

This shop shirt comes in a lightweight cotton, to keep you cool and comfortable. It features a large Indian Motorcycle® print at the back, and patches on both sleeves.

Fabric: 100% cotton
Graphics: Embroidered logo on front; printed logo on back; woven patches on sleeves

S-3XL 2867953



NEW

STARLIGHT TEE

Made in a black cotton/modal fabric, this style features a print with applied diamantes for that added sparkle.

Fabric: 50% cotton, 50% modal

Graphics: Large print with rhinestones on front; glitter print on back neck

Fit: Relaxed Fit

XS-3XL

2869751



NEW

LOGO STUD TEE

Add some sophisticated glamour with this close fit tee featuring the Indian Motorcycle® logo made entirely from diamantes.

Fabric: 95% cotton, 5% elastane

Graphics: Large diamante print on front; small glitter print on back

Fit: Close Fit

XS-3XL

2869753



FINAL SEASON

COLD SHOULDER TEE

FINAL SEASON

Add a twist to a casual wardrobe with this cold shoulder black tee. Made in a cotton/modal mix, this style features an embroidered Indian Motorcycle® headress logo at the front chest.

Fabric: 50% cotton, 50% modal

Graphics: Large embroidered logo on front; "Since 1901" on back neck

Fit: Relaxed Fit

XS-3XL

2868934



NEW

OPEN BACK ICON TEE

This Indian Motorcycle® tee presents the icon logo print with an inside-out effect. Wear this lightweight, breezy tee two ways: layer it on long and loose or tie up the back to secure in place.

Fabric: 100% viscose
Graphics: Large print on front
Fit: Relaxed Fit

XS-3XL

2869670



NEW

PORT SPARKLE TEE

This tee uses a port color foil print for a subtle all over sparkle. The Indian Motorcycle® logo is printed across the chest in silver glitter print.

Fabric: 65% polyester, 35% rayon
Graphics: Large glitter print logo on front; port foil print speckles across fabric
Fit: Close Fit

XS-3XL

2869671



NEW

FRINGE SLEEVE TEE

This black tee has fringe detailing at the shoulders and diamante rhinestones for a touch of bling. The Indian Motorcycle® logo is printed at the back neck in a silver foil finish.

Fabric: 50% cotton, 50% modal
Graphics: Small foil print on back neck
Fit: Close Fit

XS-3XL

2869672



NEW

RUCHED SHOULDER TEE

This flattering V-neck shape features a ruched shoulder detail and diamante rhinestones on the back neck logo for added sparkle.

Fabric: 100% cotton slub jersey

Graphics: Small foil print on front hem; small foil print with diamante on back neck

Fit: Relaxed Fit

XS-3XL

2869750



NEW

STRIPE SLEEVE TEE

Celebrate the Indian Motorcycle® brand with this full color hand painted headdress print across the chest with matching sleeve stripes. This tee comes in a light single jersey and features a heavy enzyme wash creating a vintage look.

Fabric: 100% cotton single jersey

Graphics: Large print on front; printed sleeve stripes; small logo print on back neck

Fit: Close Fit

XS-3XL

2869673



NEW

LACE SHOULDER TEE

This relaxed fit tee features a lace shoulder panel, with a subtle fringe detail on the front and back.

Fabric: 100% cotton slub jersey
Graphics: Small foil print on front and back
Fit: Relaxed Fit

XS-3XL

2869752



NEW

WRECKING CREW TEE

Celebrate the talent and winning legacy of the Indian Motorcycle Wrecking Crew™ with this logo tee

Fabric: 100% cotton single jersey
Graphics: Small logo print on chest; large logo on back; printed sleeve panels
Fit: Close Fit

XS-3XL

2869755



NEW

LONG SLEEVE WRECKING CREW TEE

Celebrate the talent and winning legacy of the Indian Motorcycle Wrecking Crew™ with this logo tee.

Fabric: 100% cotton single jersey
Graphics: Small logo print on chest; large logo on back; printed sleeve panels
Fit: Close Fit

XS-3XL

2869756



NEW

DIAMANTE TEE

This tee is made from a knitted jersey front with a contrasting longer length woven panel at the back. Exude glamour with the Indian Motorcycle® script logo made entirely from small silver rhinestones.

Fabric: Front- 100% cotton single jersey
Back- 100% polyester
Graphics: Large rhinestone logo on front; small script foil print on back neck
Fit: Relaxed Fit

XS-3XL

2869674



NEW

PORT HENLEY

Designed with a sweetheart neckline, this is a flattering shape for all sizes. Made in a garment dyed cotton, this tee has a subtle fading effect at the seams adding a vintage feel.

Fabric: 100% cotton single jersey
Graphics: Small embroidery on front; "Since 1901" embroidered on back neck
Fit: Close Fit

XS-3XL

2869675



NEW

LOGO RAGLAN TEE

Made in a soft slub jersey, this 3/4 sleeve raglan tee in moss gray and charcoal will be a casual staple during the upcoming weather transition months.

Fabric: 100% cotton slub jersey
Graphics: Large graphic on front; small logo on back neck; woven patch on right sleeve
Fit: Relaxed Fit

XS-3XL

2869676



NEW

GRADIENT LOGO TEE

This flattering scoop neck tee features the shield Indian Motorcycle® logo.

Fabric: 50% modal, 50% cotton
Graphics: Large print on front; small print on back
Fit: Close Fit

XS-3XL

2869709



IMC BIKE RAGLAN TEE

This flattering V-neck tee features a bike print across the back in a distressed water-based ink to create a retro style.

Fabric: 100% cotton single jersey
Graphics: Small script logo on chest; large distressed print on back
Fit: Relaxed Fit

XS-3XL

2868941



WOMEN'S FTR™ 1200 LOGO TEE

Celebrate the excitement and energy of the American Flat Track™ with this 1200 tee.

Fabric: 100% cotton single jersey
Graphics: Large print on front; small logo at back neck
Fit: Close Fit

XS-3XL
ECRU 2868973
BLACK NEW 2868972



NEW

IMC MARL TEE

A lightweight gray marl V-neck tee with lace ties at the side seams. An Indian Motorcycle® graphic is printed across the chest in an antique white, Indian Motorcycle® red and charcoal discharge ink.

Fabric: 50% cotton, 50% modal
Graphics: Large graphic on front
Fit: Relaxed Fit

XS-3XL 2869669



CONTRAST ICON TEE

A lightweight red marl tee with contrast gray marl sleeves and applied arm stripes in antique white. The Indian Motorcycle® icon is printed on the back in a white water-based print.

Fabric: 100% cotton single jersey
Graphics: Logo print on front & back; antique white sleeve stripes
Fit: Close Fit

XS-3XL 2868940



FINAL SEASON

ECRU LOGO V-NECK TEE

FINAL SEASON

This V-neck tee comes in a stretch fabric, and is cut for a close fit to the body. A large distressed Indian Motorcycle® logo is printed across the front.

Fabric: 95% cotton, 5% spandex stretch single jersey
Graphics: Distressed Indian Motorcycle® logo on the front; patch with graphics on the sleeve
Fit: Close Fit

XS-3XL 2863325



FINAL SEASON

3 QTR SLEEVE HENLEY

FINAL SEASON

This antique white tee features contrasting Indian Motorcycle® red sleeves with a large back badge celebrating Indian Motorcycle® as America's First Motorcycle Company™.

Fabric: 100% cotton single jersey
Graphics: Small logo on chest; large print on back
Fit: Relaxed Fit

XS-3XL 2868936





NEW
RIBBED TANK

This navy tank comes in a flattering ribbed fabric. The Indian Motorcycle® script logo is printed on the front in a light plastisol print.

Fabric: 62% polyester, 33% rayon, 5% elastane
Graphics: Large front print & small back print
Fit: Close Fit

XS-3XL

2869758



NEW
TIE TANK

This easy knit tank is made with a cool holographic print and a tie front detail.

Fabric: 95% cotton, 5% elastane
Graphics: Large holographic print on front; small holographic print on back
Fit: Close Fit

XS-3XL

2869759


NEW

MUSCLE SHIELD TANK

Made in a tri-blend fabric mix, this loose fit tank features the shield Indian Motorcycle® logo.

Fabric: 50% polyester, 38% cotton, 12% modal
Graphics: Large chest print; small print on back
Fit: Relaxed Fit

XS-3XL

2869710


FINAL SEASON

HEADRESS TANK, PORT

FINAL SEASON

This port color tank comes in a stretch fabric and is cut for a close and flattering fit to the body. A simple black Indian Motorcycle® headdress is printed across the chest using a discharge print.

Fabric: 50% cotton, 46% modal, 4% spandex
Graphics: Distressed headdress print on front; small script logo on back neck
Fit: Close Fit

XS-3XL

2868939


NEW

OPEN BACK TANK

This tank features a split at the center back, low enough to provide modesty. A gold, raised print using the Indian Motorcycle® script logo is placed across the chest.

Fabric: 65% polyester, 35% viscose slub jersey
Graphics: Large high density logo on front
Fit: Relaxed Fit

XS-3XL

2869677


NEW

SIDE LACE TANK

A fashionable tank with contrast color charcoal fabric at the back and fringe detailing at the side seams. Side seams are stitched closed for modesty and the longer length back creates a stylish asymmetric shape. The Indian Motorcycle® icon headdress logo is printed across the chest and fades from red to charcoal.

Fabric: 50% cotton, 50% modal single jersey
Graphics: Large print on front; small "Since 1901" print on back neck
Fit: Relaxed Fit

XS-3XL

2869678


NEW

QUICK DRY TANK

This tank offers UV protection SPF50, quick dry and high wicking properties to keep you cool and dry on summer rides.

Fabric: 100% polyester
Graphics: Large headdress logo print on front; small logo on back neck
Fit: Close Fit

XS-3XL

2869679


FINAL SEASON

SNOW WASH TANK, GRAY

FINAL SEASON

This relaxed fit sleeveless gray tank is made using a snow wash to create a 'mottling finish' resulting in a vintage, retro look. The tank features an Indian Motorcycle® glitter print across the chest and back neck.

Fabric: 100% cotton single jersey
Graphics: Glitter print on front; small glitter print on back neck
Fit: Relaxed Fit

XS-3XL

2868938

WOMEN'S CASUALWEAR



QUILT STITCH HOODIE

This red and gray marl fleeceback hoodie features diamond shaped topstitching detail at the hood and printed fabric stripes on the sleeve. An Indian Motorcycle icon headdress logo is embroidered on the back and a small logo is embroidered at the front chest.

Fabric: 70% cotton, 30% polyester
Graphics: Logo embroidery on front & back

XS-3XL 2868942



FINAL SEASON

IMC CONTRAST ZIP THRU

FINAL SEASON

This classic gray marl zip-thru with contrast sleeves features a felt applique logo at the back, an embroidered script logo at the front chest and a headdress logo patch at the sleeve. This zip-thru is made in a soft cotton polyester mix and features a stylish collar.

Fabric: 70% cotton, 30% polyester
Graphics: Embroidered logo on front; embroidered & applique logo on back; woven patch on right sleeve; leather look patch at hem
Additional Features: Branded buttons & zippers

XS-3XL 2868943



FINAL SEASON

LOGO SWEAT

FINAL SEASON

This classic navy sweat features subtle Indian Motorcycle branding across the front in navy applique and embroidery. A small embroidery is placed at the back neck.

Fabric: 100% cotton loopback
Graphics: Embroidered & applique logo on front; embroidered logo on back; "Since 1901" on back hem

XS-3XL 2868944



NEW CASUAL HOODIE

This pullover hoodie features an Indian Motorcycle port color glitter print on the chest and hood. Designed with a dropped back hem.

Fabric: 70% cotton, 30% polyester loopback
Graphics: Large logo on front; small logo on hood

XS-3XL 2869680



NEW LOGO ZIP HOODIE

This zip up hoodie is made in a flattering port marl color and features a silver exposed center front zip with Indian Motorcycle prints on the sleeve, chest and hood.

Fabric: 70% cotton, 30% polyester loopback
Graphics: Small logo print on front; large print on sleeve & hood

XS-3XL 2869681



SEMI PRO SUNGLASSES
PAGE 65


NEW

SHOP SHIRT

This classic button up shop shirt features a large chest print with stylish matching sleeve stripes and a mesh panel at the underarm to keep you cool and comfortable.

Fabric: 65% polyester; 35% cotton
Graphics: Large print on front and back; snap down collar

XS-3XL 2869757



COLOR BLOCK SHIRT

A classic flat collar bowling style shirt. This shirt features strong branding, with a large back embroidery, two sleeve patches, and a small chest embroidery.

Fabric: 65% polyester, 35% cotton
Graphics: Embroidered logo on front & back; branded patches on left and right sleeve

XS-3XL 2866156



RED PLAID SHIRT

A soft cotton, wardrobe staple with adjustable sleeve that can be worn 3/4 length or full length. This shirt comes in a slim, flattering fit.

Fabric: 100% cotton plaid
Graphics: Embroidered logo on back
Additional Features: Branded buttons; faux leather patch on chest pocket
Fit: Close Fit

XS-3XL 2868805

JUNIORS



LONG SLEEVE BODYSUIT 3 PACK

Your little riders can show their Indian Motorcycle® pride with this Long Sleeve Bodysuit 3 pack. They provide comfortable coverage and feature distinctive Indian Motorcycle® branding.

Fabric: 100% cotton single jersey
Graphics: Printed logo on front & back;
3 pack of navy, red & white

SIZE:	PART #:
3-6 MONTHS/ S	286880102
6-12 MONTHS/ M	286880103
12-18 MONTHS/ L	286880106



SHORT SLEEVE BODYSUIT 3 PACK

Your little riders can show their Indian Motorcycle® pride with this Short Sleeve Bodysuit 3 pack. They come in a lightweight fabric to keep your little one cool and feature distinctive Indian Motorcycle® branding.

Fabric: 100% cotton single jersey
Graphics: Printed logo on front & back;
3 pack of navy, red & white

SIZE:	PART #:
3-6 MONTHS/ S	286880202
6-12 MONTHS/ M	286880203
12-18 MONTHS/ L	286880206



LOGO TEES 2 PACK

Your little riders can show their Indian Motorcycle® pride with this short sleeve tee 2 pack. Featuring distinctive Indian Motorcycle® branding.

Fabric: 100% cotton single jersey
Graphics: Printed logo on front & back;
2 pack of navy & white

SIZE:	PART #:
2-3 YEARS/ XS	286886701
3-4 YEARS/ S	286886702
4-5 YEARS/ M	286886703
5-6 YEARS/ L	286886706



INDIAN MOTORCYCLE® EYEWEAR

The Indian Motorcycle® eye-wear range has been developed to look great and also perform when riding. All styles are CE certified and have lightweight frames and shatter resistant lenses, which also include UVA/UVB filters, anti-fog coatings and are scratch resistant.

The Highway, Lifestyle, Performance & Semi-Pro Sunglasses are also prescription ready. 7eye by Panoptx provides repair services and prescription lenses at additional cost. Please consult local laws regarding overseas made prescription lenses. For quotations, please contact 7eye by Panoptx USA at (001) 909-509-8228 or info@7eye.com



NEW

ATLANTA SUNGLASSES

CE

Add a hint of color with these matte framed sunglasses with blue rubber details on the earpieces.

Frame: Lightweight 100% polycarbonate matte black frame with blue rubber details on the earpieces

Lens: 6R Curve Gray Polycarbonate lens+Blue Revo coating

Additional features: 100% UVA+UVB protection, shatter-resistant.

CE certified; EU Regulation 2016/425. EN ISO 12312-1:2013+A1:2015 Lens Filter Category 3

ONE SIZE

2869714



NEW

PHOENIX SUNGLASSES

CE

These brown sunglasses are a versatile and stylish accessory you can wear with any kind of outfit.

Frame: Lightweight 100% polycarbonate gloss tortoise shell frame with antique brass Indian Motorcycle® logo

Lens: 6R Polycarbonate Gradient Brown lens

Additional features: 100% UVA+UVB protection, shatter-resistant.

CE certified; EU Regulation 2016/425. EN ISO 12312-1:2013+A1:2015 Lens Filter Category 3

ONE SIZE

2869715

**NEW****LIBERTY SUNGLASSES**

Be bold with these frames ideal for riding. Comes with branded zipper case and microfiber cloth.

Frame: Lightweight 100% polycarbonate glossy black frame with antique brass logo

Lens: Brown polycarbonate lens

Additional features: 100% UVA+UVB protection, shatter-resistant, anti-fog coating, non-detachable EVA foam eyecup to reduce wind & peripheral light for a more comfortable ride.

CE certified; Directive 89/686/EEC. EN ISO

12312-1:2013+A1:2015 Lens Category 1

ONE SIZE

2869646

**ICON SUNGLASSES**

Ride confident with our yellow lens sunglasses. The color negates oncoming headlights and make surroundings appear brighter in dull conditions.

Frame: Lightweight 100% polycarbonate matte black frame

Lens: Yellow polycarbonate lens

Additional features: 100% UVA+UVB protection, shatter-resistant, anti-fog coating, non-detachable EVA foam eyecup to reduce wind & peripheral light for a more comfortable ride.

CE certified; Directive 89/686/EEC. EN ISO

12312-1:2013+A1:2015 Lens Filter Category 0

ONE SIZE

2868696

**NEW****FREEWAY SUNGLASSES**

Ride confident with our clear lens Freeway Sunglasses which feature an eyecap to reduce wind. Comes with branded zipper case and microfiber cloth.

Frame: Lightweight TR90 Nylon glossy black frame

Lens: Clear polycarbonate lens

Additional features: 100% UVA+UVB protection, shatter-resistant, anti-fog coating, non-detachable EVA foam eyecup to reduce wind & peripheral light for a more comfortable ride.

CE certified; Directive 89/686/EEC. EN ISO

12312-1:2013+A1:2015 Lens Category 1

ONE SIZE

2869647

**SHADOW SUNGLASSES**

Be ride ready with the Shadow Sunglasses. Featuring a detachable EVA foam eye cup that is ideal for riding and casual use.

Frame: Lightweight 100% polycarbonate glossy black frame with matte temple design

Lens: Gray polycarbonate lens

Additional features: 100% UVA+UVB protection, shatter-resistant, anti-fog coating, detachable EVA foam eyecup to reduce wind & peripheral light for a more comfortable ride.

CE certified; Directive 89/686/EEC. EN ISO

12312-1:2013+A1:2015 Lens Filter Category 3

ONE SIZE

2868846

**NEW****HIGHWAY SUNGLASSES**

The Highway Sunglasses offer superior performance levels. Made from a lightweight and hard wearing nylon frame with polycarbonate lens. Comes with branded zipper case and microfiber cloth.

Frame: Lightweight TR90 Nylon glossy black frame

Lens: Clear polycarbonate lens

Additional features: 100% UVA+UVB protection, shatter-resistant, detachable EVA foam eyecup. Prescription Ready.

CE certified; EU Regulation 2016/425. EN ISO 12312-1:2013+A1:2015

Lens Filter Category 3. Impact Resistance Level 2

ONE SIZE

2869648

**ENTRY SUNGLASSES**

These sunglasses are designed to be worn when riding and include an EVA foam eyecup to reduce wind and peripheral light.

Frame: Lightweight TR90 Nylon matte black frame

Lens: Gray polycarbonate lens

Additional features: 100% UVA+UVB protection, shatter-resistant, anti-fog coating, non-detachable EVA foam eyecup to reduce wind & peripheral light for a more comfortable ride.

CE certified; Directive 89/686/EEC. EN ISO

12312-1:2013+A1:2015 Lens Filter Category 3

ONE SIZE

2863996



OPEN FACE HELMET
WHITE STRIPE
PAGE 30



LEGENDARY SUNGLASSES



Be bold and legendary with these frames ideal for riding.

Frame: Lightweight 100% polycarbonate glossy black & white patterned frame
Lens: Gray polycarbonate lens
Additional features: 100% UVA+UVB protection, shatter resistant, anti-fog coating, non-detachable EVA foam eyecup to reduce wind & peripheral light for a more comfortable ride.
CE certified; Directive 89/686/EEC. EN ISO 12312-1:2013+A1:2015 Lens Filter Category 3

ONE SIZE

2868697



SPIRIT SUNGLASSES



Add a hint of color with these midnight blue framed sunglasses with rubber nose protector.

Frame: Lightweight 100% polycarbonate glossy dark blue frame
Lens: Gray polycarbonate lens
Additional features: 100% UVA+UVB protection, shatter-resistant, anti-fog coating.
CE certified; Directive 89/686/EEC. EN ISO 12312-1:2013+A1:2015 Lens Filter Category 3

ONE SIZE

2868847



LIFESTYLE SUNGLASSES



The Lifestyle Sunglasses look great on or off the bike, made from lightweight polycarbonate frame and with a shatter resistant UVA/UVB lens.

Frame: Lightweight polycarbonate matte black frame
Lens: Brown polycarbonate lens
Additional features: 100% UVA+UVB protection, shatter resistant, anti-fog coating. Prescription ready.
CE certified; Directive 89/686/EEC. EN ISO 12312-1:2013+A1:2015 Lens Filter Category 3

ONE SIZE

2863973



PERFORMANCE SUNGLASSES CE

The riders choice, the Performance Sunglasses offer a wide range of features for your riding needs. From the high quality, lightweight Rochflex frame to the quick reacting photochromic lens that changes from clear to gray depending on the light. The PU foam eye-cup offers superior wind and peripheral light protection.

Frame: Quality lightweight RochFlex glossy black frame
Lens: Photochromic Eclipse polycarbonate lens changes from clear to gray. Transition time is 60-90 secs.
Additional features: 100% UVA+UVB protection, shatter-resistant, anti-fog coating, detachable latex-free PU foam eyecup with sweat resistant patented rubber-seal on top of foam. Prescription ready. CE certified; Directive 89/686/EEC. EN ISO 12312-1:2013+A1:2015 Lens Filter Category 3. Impact Resistance Level 2.

ONE SIZE 2864405



SEMI PRO SUNGLASSES CE

The Semi Pro sunglasses offer superior performance levels. Made from a lightweight and hard wearing nylon frame with a polycarbonate lens.

Frame: Lightweight TR90 Nylon matte black frame
Lens: Gray polycarbonate lens
Additional features: 100% UVA+UVB protection, shatter-resistant, detachable EVA foam eyecup. Prescription ready. CE certified; EU Regulation 2016/425. EN ISO 12312-1:2013+A1:2015 Lens Filter Category 3. Impact Resistance Level 2

ONE SIZE 2864404

SUNGLASSES DISPLAY

Lockable display unit with a wooden base and metal structured body. Fits up to 6 pairs of sunglasses and comes with two keys. No sunglasses included. Easy to assemble. Size: 8" (20 cm) W x 8" (20 cm) D x 24.5" (62 cm) H.

FITS 6 PAIRS 2867468



IMC GOGGLE CE



This custom Barstow goggle is a stylish and professional collaboration with 100%, featuring the custom jacquard logo of Indian Motorcycle® on the adjustable strap and etched logo on lens. It is equipped with triple-layer face foam providing excellent moisture management on the move and the gray anti-fog Lexan® lens with integrated pins for seamless tear off application. The upper vents in signature red force air in and channel out moisture to reduce fogging. CE certified; Directive 89/686/EEC. EN 1836:2005+A1:2007 Lens Filter Category 1.

ONE SIZE 2868961



NEW COSTE GOGGLE CE



This custom goggle is a stylish and professional collaboration with 100% and artist Dimitri Coste. It is equipped with triple-layer face foam providing excellent moisture management on the move and the gray anti-fog Lexan® lens have integrated pins for seamless tear off application. The upper vents in signature red force air in and channel out moisture to reduce fogging. CE certified; Directive 89/686/EEC. EN 1836:2005+A1:2007 Lens Filter Category 1.

ONE SIZE 2869713

ADVENTURE HELMET
GLOSS BLACK
PAGE 26



INDIAN MOTORCYCLE® HEADGEAR



NEW ICON LOGO HAT

Graphics: Woven patch on front
Features: Six panel trucker hat; adjustable leather strap

ONE SIZE 2869761



NEW CAMO TRUCKER HAT

Graphics: Oil based print
Features: Adjustable plastic closure; mesh back

ONE SIZE 2869703



NEW SCRIPT ICON TRUCKER HAT

Graphics: Embroidered patch on front
Features: Six panel truck hat; adjustable plastic closure; mesh back; contrast brim

ONE SIZE 2869639



CHECKERED HAT

Graphics: High density 3D script logo print
Features: Flat skip style with checker print; adjustable plastic closure; mesh back

ONE SIZE 2868959



BIG SIZES IMC FLEX FIT HAT

Graphics: Rubber logo on front; woven patch on back
Features: Flat skip style available in two sizes

S/M 286869203
L/XL 286869206



HEADRESS LOGO HAT

Graphics: Embroidered patch
Features: Adjustable plastic closure; flat skip style; mesh back

ONE SIZE 2867609



NEW BLOCK PATCH HAT

TRUCKER Graphics: Embroidered patch on front
Features: Adjustable plastic closure;
mesh back

ONE SIZE 2869641



CIRCLE ICON TRUCKER HAT

TRUCKER Graphics: Embroidered logo
Features: Adjustable plastic closure;
mesh back

ONE SIZE 2868694



QUALITY TRUCKER HAT

TRUCKER Graphics: Embroidered patch on front;
embroidered "Since 1901" on back
Features: Adjustable plastic closure;
mesh back

ONE SIZE 2862313



CIRCLE PATCH HAT

Graphics: Embroidered icon graphic on front;
graphic patch on the side
Features: Adjustable strap with metal clasp

ONE SIZE 2863628



BLACK LOGO HAT

Graphics: Embroidered Indian Motorcycle®
logo on front; screen printed logo on back
Features: Adjustable Velcro® closure

ONE SIZE 2863727



FTR™ 1200 TRUCKER HAT

TRUCKER Graphics: FTR™ 1200 oil based print
Features: Adjustable plastic closure; mesh back

ONE SIZE 2868958



NEW PORT MARL HAT

TRUCKER Graphics: Oil based print
Features: Adjustable plastic closure;
mesh back

ONE SIZE 2869640



BAKER BOY HAT

Graphics: Embroidered logo on back
Features: Baker boy style in wool & polyester
herringbone fabric; quilted interior; snap
down peak; available in two sizes

S/M 286896003
L/XL 286896006



GRAY ARMY HAT

Graphics: Embroidered logo
Features: Adjustable strap with metal clasp

ONE SIZE 2868945

INDIAN MOTORCYCLE® HEADGEAR



NEW

HEADRESS MULTIFUNCTIONAL HEADWEAR

Multifunctional stretchy headwrap with large branding. Wear it in your own style.

Graphics: Tiled logos

Features: Nine reference styles provided

ONE SIZE

2869642



MULTIFUNCTIONAL HEADWEAR

Multifunctional stretchy headwrap with all over logo print. Wear it in your own style.

Graphics: Tiled logos

Features: Nine reference styles provided

ONE SIZE

2865233



NEW

MERINO WOOL SCARF

Unisex lightweight and comfortable scarf made of merino wool. It features knitted in IndianMotorcycle® logo and contrast stripes in signature red and antique white colors. 10.2" (26cm) x 63" (160cm).

Graphics: Indian Motorcycle® Script logo

Features: 100% merino wool

ONE SIZE

2869765



NEW

BLACK SILK BANDANA

This 100% silk bandana features large branding in a repeating pattern. Wear it in your own style. 23.6" (60cm) x 23.6" (60cm).

Graphics: Tiled logos

Features: 100% silk

ONE SIZE

2869762



NEW

NAVY SILK BANDANA

This 100% silk bandana features large branding in a repeating pattern. Wear it in your own style. 23.6" (60cm) x 23.6" (60cm).

Graphics: Tiled logos

Features: 100% silk

ONE SIZE

2869763



INDIAN MOTORCYCLE® BANDANA

A soft, stylish bandana featuring a repeating pattern of branded graphics on a full-sized bandana that can be worn or used in many ways. 23.6" (60cm) x 23.6" (60cm).

Graphics: Printed script & headress logos

ONE SIZE

2863846



BE LEGENDARY™ BANDANA

Two way bandana print - fold in half for two different styles as you wish. 23.6" (60cm) x 23.6" (60cm).

Graphics: Tiled script logo & large icon logo

ONE SIZE

2867608



NEW

HEADRESS HEAD TIE

Made from cotton with a discharge print. Elasticated rear band for close fit.

Graphics: Printed logos

Features: Elastic band at back

ONE SIZE

2869643



HEAD TIE

This cotton head tie features large branding and an elasticized rear band for a comfortable fit. It also ties in the back.

Graphics: Discharge logo print

Features: Elastic band & tie fasten for adjustability

ONE SIZE

2865234



ICON HEAD WRAP

Embroidered patch logo at front and embroidered stitching at rear. Tie fasten back for close fit.

Graphics: Woven patch on front; embroidered script logo at rear
Features: Tie fasten

ONE SIZE 2867606



HEAD WRAP

All-day comfort and classic rider style. Enhances comfort when worn inside a helmet. There are Indian Motorcycle® logos on the front and back, and an adjustable tie closure at the back.

Graphics: Printed script logo on front; headdress logo on back
Features: Tie fasten

ONE SIZE 2863844



SCRIPT ICON SKULL WRAP

All over script logo print in tonal black. Elastic and tie at rear for a close fit.

Graphics: Felted patch on front; all over tonal black script logo print; embroidered script logo at rear
Features: Tie fasten

ONE SIZE 2867607



NEW

HEADRESS NECK WARMER

This Headdress Neck Warmer, made of fleeceshell fabric, provides extra comfort in all conditions. There are Indian Motorcycle® logos on the front and back.

Graphics: Printed script and headdress logos
Features: Toggle adjuster

ONE SIZE 2869764



ICON FLEECE NECK WARMER

Two debossed logos on sides, embroidered logos on front, made of polyester fleece shell fabric and jersey lining with elastic toggle.

Graphics: Embroidered logo, debossed graphics
Features: Toggle adjuster

ONE SIZE 2863998



ICON FLEECE BEANIE

Debossed icon logo at side, embroidered logos on front and back, made of polyester fleece shell fabric and jersey lining.

Graphics: Embroidered logo, debossed graphics

ONE SIZE 2863997







NEW DOG COLLAR

This black leather dog collar is lined with soft, quick dry neoprene for a comfortable fit. Silver reflective, secure buckle with engraved logo and D-ring and 5 punch holes. Available in two sizes. Size S/M: 1" (2.5cm) wide x 12.2"- 15.7" (31cm - 40cm) adjustable length. Size L/XL: 1.8" (3.5cm) wide x 16.1" - 19.7" (41cm - 50cm) adjustable length.

S/M 286969503
L/XL 286969506



NEW DOG LEASH

Soft black leather, made to stand up to any active dog and their human. Design features neoprene lined handle for ultimate comfort. Secure chunky antique silver buckle with spring mechanism and embossed branding. 0.8" (2cm) wide x 63" (160cm) tall.

ONE SIZE 28696996



NEW PET BANDANA - 2 PACK

Give your pet real Indian Motorcycle® style. Set includes two different graphics with repeating pattern of branded logos. Available in two sizes. Size S/M: 15.7" (40cm) square. Size L/XL: 19.7" (50cm) square.

S/M 286969703
L/XL 286969706



NEW DOG TEE - 2 PACK

This branded 100% cotton dog tee with comfortable coverage allows your pet to show off Indian Motorcycle® pride. Set includes two different graphics with script & icon logos. Available in three sizes. See size chart below.

SMALL 286969802
MEDIUM 286969803
LARGE 286969806



NEW FEEDING BOWL - 2 PACK

Our Indian Motorcycle® stainless steel dog bowl is perfect to feed your hungry pet. Bowls have printed logo, rubber bottom and polished finish for long-lasting beauty. Set includes two sizes: 21oz (610ml) & 32oz (910ml).

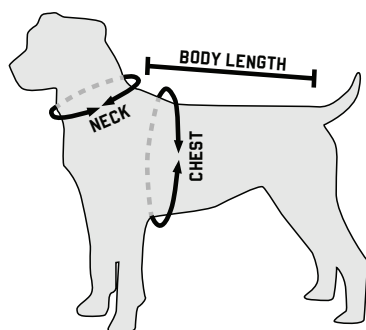
21oz. & 32oz. 28696999



NEW SQUEAK BALL - 5 PACK

Keep your pet happy with set of five Indian Motorcycle® Squeak Tennis Balls. Made from a tough tennis ball material with built in squeaker, they float in water making them perfect whatever your surroundings. 2.5" (6.4cm) wide.

2.5" 2869700



DOG TEE						
SIZE	S		M		L	
	IN	CM	IN	CM	IN	CM
Neck Width	6.1	15.5	6.9	17.5	7.7	19.5
Chest	18.2	46	22	56	26	66
Back Length	12.2	31	15.2	38.5	18.1	46



NEW CHEW TOY

This branded 100% natural rubber Indian Motorcycle® Chew Toy comes in a great shape for flinging, tugging and chewing. Great for dogs who love the standard bone shape. 2.8" (7cm) wide x 7.1" (18cm) tall.

2.8" x 7.1" 2869701



NEW PULL TOY

Our shaped rubber Indian Motorcycle® tank Pull Toy will provide interactive fun for you and your dog. The rugged ropes will help keep gums and teeth clean and healthy. The tank has star shaped holes on each end so you can stuff your pet with treats. 7.1" (18cm) tall.

7.1" 2869702

INDIAN MOTORCYCLE® BAGS & LUGGAGE

FINAL SEASON

WAXED COTTON BACKPACK

FINAL SEASON

This waxed cotton backpack is stylish and large enough to carry everything from a laptop to a rain suit and much more. This backpack features premium heavy-duty waxed cotton canvas with leather trim and adjustable shoulder straps. Additional features include; fleece-lined laptop pocket, magnet closing on pockets and durable brass zippers. Bag dimensions: 19" (48cm) high x 13.3" (34cm) wide x 6.5" (17cm) deep.

ONE SIZE

2868686



FINAL SEASON

WAXED COTTON DUFFLE BAG

FINAL SEASON

This large duffle is durable and designed to carry a wide variety of gear. This bag features premium heavy-duty waxed cotton canvas with leather trim. The large main cargo space closes with a heavy-duty brass zipper. Bag dimensions: 12.5" (32cm) high x 20" (51cm) wide x 9.4" (24cm) deep.

ONE SIZE

2868687



FINAL SEASON

WAXED COTTON MESSENGER BAG

FINAL SEASON

This durable messenger bag is large enough to carry most laptops with 15" displays. This bag features premium heavy-duty waxed cotton canvas, and leather trim. Comes with an adjustable shoulder strap, and multiple interior pockets. Fleece-lined laptop compartment. Bag dimensions: 11.8" (30cm) high x 15" (38.5cm) wide x 5.4" (14cm) deep.

ONE SIZE

2868688



FINAL SEASON

WAXED COTTON WASH BAG

FINAL SEASON

A classic wash bag takes on extra style with Indian Motorcycle® branding. This durable waxed cotton canvas bag features embossed leather Indian Motorcycle® branding and branded zipper pull. This bag is lined and roomy enough to carry toiletries or be used to carry other small items. Bag dimensions: 7.5" (19cm) high x 16" (40cm) wide x 6" (15cm) deep.

ONE SIZE

2868690



NEW

WOMEN'S CROSS BODY BAG

An everyday stylish way to carry small and medium items: keys, wallet, phone, glasses, notebook, and more. This premium leather bag has a debossed Indian Motorcycle® headress logo on the flap and 100% cotton fabric lining. The flap closes securely with magnetic snap buttons on both edges. The shoulder strap is adjustable and removable. This bag comes with a soft dust bag, perfect for gift giving. Bag dimensions: 11" (28cm) wide x 6.3" (16cm) high x 4.3" (11cm) deep.

ONE SIZE

2869644



FINAL SEASON

WAXED COTTON TOTE

FINAL SEASON

This waxed cotton women's tote is a stylish and durable option made of a premium heavy-duty waxed cotton canvas with leather trim and adjustable shoulder straps. Additional features include; internal zip pocket, magnetic closing on pockets and flap, protective zip on main compartment using a durable brass zipper. Bag dimensions: 14" (36cm) high x 18" (46cm) wide x 6" (15cm) deep.

ONE SIZE

2868689





ONE SIZE 2868946

ONE SIZE 2869645

ONE SIZE 2867600

ONE SIZE 2867599

ONE SIZE 2867558

INDIAN MOTORCYCLE® MAN CAVE, GARAGE & OUTDOOR



NEW

INDIAN MOTORCYCLE® HEADDRESS FRIDGE MAGNETS

Give your fridge real Indian Motorcycle® style. Set includes two headdress shaped magnets in different colors. 3.1" (8cm) wide.

SET OF 2

2869772



NEW

INDIAN MOTORCYCLE® ICON FRIDGE MAGNETS

Give your fridge real Indian Motorcycle® style. Set includes two circle magnets with different logos and colors. 2.4" (6cm) wide.

SET OF 2

2869785



NEW

INDIAN MOTORCYCLE® SCRIPT FRIDGE MAGNETS

Give your fridge real Indian Motorcycle® style. Set includes two rectangle magnets in different colors. 3.1" (8cm) wide.

SET OF 2

2869786



NEW

2 IN 1 HEADDRESS STOPPER

Enjoy wine without the troubles of too many gadgets laying around. This 2-in-1 Headdress Corkscrew and Wine Stopper will serve all your needs. Keep it at home or carry on road trips. 3.1" (7.8cm) x 5.1" (13cm).

3.1" x 5.1"

2869652



INDIAN MOTORCYCLE® BADGE LOGO BOTTLE OPENER

Pop tops in style with this premium metal bottle opener. It features a stylish design, efficient bottle opener, and red and silver Indian Motorcycle® logo. 2.4" (6cm) wide x 3.3" (8.5cm) tall.

2.4" x 3.3"

2863852



INDIAN MOTORCYCLE® SLAP KOOZIE

Keep your beverage cool and your hands warm with the Indian Motorcycle® slap koozie. 9" (23cm) wide x 3.1" (8cm) tall.

9" x 3.1"

2863959



NEW

ICON COASTERS

Enjoy your beverage while protecting your table or bar with Indian Motorcycle® rubber coasters. Diameter: 3.5" (9cm).

SET OF 6

2869773



NEW

WALL CLOCK

Brighten your man cave with the glow of the Indian Motorcycle® Wall Clock. This gloss black framed wall clock features a speedometer graphic which delivers precise and accurate time. Diameter: 11.8" (30cm). Depth: 2" (5cm).

11.8" DIA.

2869651




NEW

CIRCLE WOODEN SIGN

This barrel sign will be an iconic piece in your bar. Made of 100% pine wood. Diameter: 15.7" (40cm).

15.7" DIA.

2869766


NEW

CORRUGATED SIGN

This corrugated metal sign will be an iconic piece in your collection. UV & rust resistant. Suitable for indoor and outdoor. 15.7" (40cm) wide x 11.8" (30cm) tall.

15.7" x 11.8"

2869767

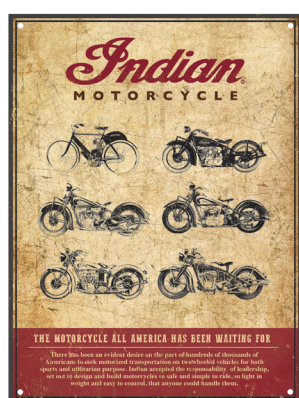

NEW

LEGEND LIVES SIGN

Expand your collection with this beautiful Legend Lives metal sign featuring an embossed headdress logo. 15.7" (40cm) wide x 11.8" (30cm) tall.

15.7" x 11.8"

2869768

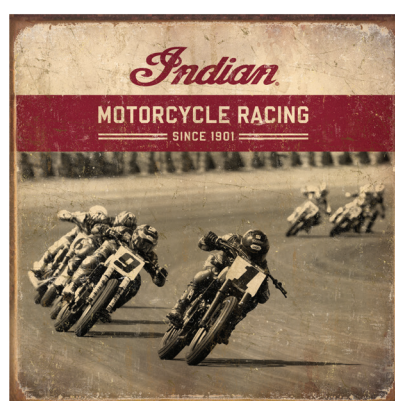

NEW

MONTAGE SIGN

Own a piece of historic Indian Motorcycle® marketing drawing with this antique metal sign. 11.8" (30cm) wide x 15.7" (40cm) tall.

15.7" x 11.8"

2869769



RACER SIGN

Add this beautiful Racer Sign to your metal sign collection. Features Indian Motorcycle® Flat Track Racing. 13.4" (34.1cm) wide x 13.4" (34.1cm) tall.

13.4" x 13.4"

2868949

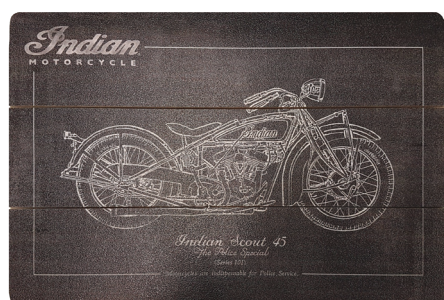


CIRCLE BOMBER GIRL METAL SIGN

Vintage inspired, this is an iconic sign with the retro styled pin-up girl. 12" (30.5cm) diameter.

12" DIA.

2868947



WOODEN CHALK SIGN

Own a piece of history with this Indian Motorcycle® marketing sketch wooden sign with chalk print effect. 15.7" (40cm) wide x 10.8" (27.5cm) tall.

15.7" x 10.8"

2868948



GENUINE PARTS & ACCESSORIES SIGN

Add this Genuine Parts & Accessories metal sign featuring the embossed headdress logo into your collection. 15.7" (40cm) wide x 11.8" (30cm) tall.

15.7" x 11.8"

2864421



FIRST MOTORCYCLE SIGN

Vintage inspired, this is an iconic sign with embossed effect on the logo. 15.7" (40cm) wide x 11.8" (30cm) tall.

15.7" x 11.8"

2864420

INDIAN MOTORCYCLE® MAN CAVE, GARAGE & OUTDOOR



HOME RUG

Featuring the icon and headdress logos, this home rug will complete the total look of your man cave. Size: 116.2" (295cm) x 76.8" (195cm).

116.2" x 76.8" 2864417



WOOL THROW

This high quality, hardy and timeless wool throw with iconic headdress logo will provide you with the comfort and warmth you need. Machine washable. Made in USA. Size: 80" (203cm) x 50" (127cm).

80" x 50" 2864414

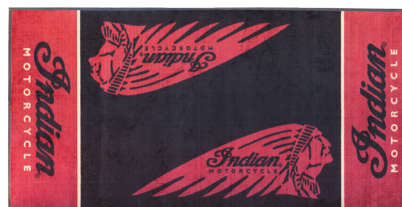
MADE IN
★ ★ ★ ★ ★
U.S.A
★ ★ ★ ★ ★



NEW DOOR MAT

Featuring the Indian Motorcycle® icon logo, this door mat will complete the look of your man cave or home. Size: 35.4" (90cm) x 23.6" (60cm).

35.4" x 23.6" 2869779



LOGO BIKE MAT

A heavy-duty garage mat to park your bike on or kneel on while doing maintenance. Mat is 103.9" (264cm) x 52.4" (133cm).

103.9" x 52.4" 2863879



NEW HEADDRESS TOWEL

Featuring the headdress and script logos, this oversized towel will provide you with the comfort you need. Size: 61.8" (157cm) x 31.5" (80cm).

61.8" x 31.5" 2869650



LOGO PATCH

4.3" WIDE

2863861



CIRCLE ICON PATCH

3.1" WIDE

2863862



COLORLED HEADRESS PATCH

4.5" WIDE

2863864



NEW

FTR™ 1200 STICKER SET

This sticker set contains an assortment of full-color FTR™ 1200 logos. Not suitable for motorcycle bodywork. 13.25" (34cm) high x 8.5" (22cm) wide.

13.25" x 8.5"

2869778



INDIAN MOTORCYCLE® STICKER SET

Add branding to nearly any surface. Not suitable for motorcycle bodywork. 13.25" (34cm) high x 8.5" (22cm) wide.

13.25" x 8.5"

2863865



NEW

SHOWBOARD FOR PINS

Showcase the full Indian Motorcycle® pin line in your dealership. Display comes with a space for 48 pins. 13" (33cm) high x 8.7" (22cm) wide. (For dealer use only.)

13" x 8.7"

2869784



NEW

SCOUT® PIN

1.77cm WIDE

2869780



NEW

SCOUT® SIXTY PIN

1.77cm WIDE

2869781



NEW

CHIEF® CLASSIC PIN

1.77cm WIDE

2869782



NEW

ROADMASTER® PIN

1.77cm WIDE

2869783



INDIAN MOTORCYCLE® CIRCLE ICON PIN

1" WIDE

2863674



INDIAN MOTORCYCLE® HEADRESS PINS

1.6" WIDE
BROWN
COLORED

2863676
2863675


INDIAN MOTORCYCLE® LOGO PIN

1.2" WIDE

2863673

PARTS BAG (NOT PICTURED)

M: 15.5" (40cm) w x 17.5" (45cm) h
L: 27.5" (70cm) w x 19.5" (50cm) h
Order in multiples of 10.

MEDIUM
LARGE

2863991
2863994

CASUALWEAR HANGER (NOT PICTURED)

Order in multiples of 10.

ONE

2863397

INDIAN MOTORCYCLE® GIFTS & COLLECTIBLES



NEW

BLACK LEATHER BELT

This belt in black vintage leather delivers outstanding versatility and has embossed Indian Motorcycle® logo.

S-2XL

2869776



NEW

ICON BELT BUCKLE

This metal buckle features a multi-colored icon logo with matte silver finish. Ready to use on any leather belt (not included). 3.6" (9.8cm) wide.

3.6" WIDE

2869712



NEW

HEADRESS BELT BUCKLE

This high quality metal buckle features an Indian Motorcycle® embossed headress logo and is ready to use on any leather belt (not included). 3.6" (9.8cm) wide.

3.6" WIDE

2869711



MEN'S CIRCLE BUCKLE

This premium brass Circle Buckle features a multi-colored, enamel Indian Motorcycle® logo, and is ready for use with any leather belt (not included). Buckle diameter is 3.3" (8.5cm).

3.3" WIDE

2863822



INDIAN® SPORT SCOUT® 1:12 SCALE

Display the Indian® Sport Scout® as a great conversation starter or reminder of the early days. Perfect for your desk or mantle.

1:12 SCALE

2863683

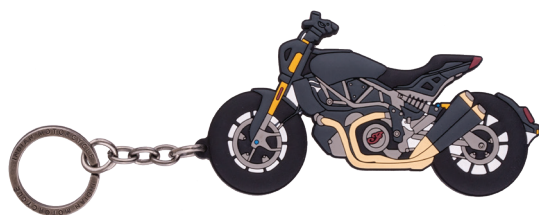


KEY FOB, METAL

This handsome 100% metal alloy headress logo key fob has a bottle opener and key ring. 3.1" (8cm) wide.

3.1" WIDE

2863336


NEW
FTR™ 1200 RUBBER KEY RING

This graphic rubber key ring features the FTR™ 1200 bike. Made with specialized machinery for defined cut out details. 5.9" (15cm) wide x 2.2" (5.5cm) tall.

5.9" x 2.2"

2869775


NEW
ICON RUBBER KEY RING

Icon logo rubber key ring. Made with specialized machinery for defined cut out details on logo. Diameter: 1.8" (4.5cm)

1.8"

2869649


HEADRESS RUBBER KEY RING

Iconic headdress rubber key ring. Made with specialized machinery for defined cut out details on logo. 1.2" (3cm) wide x 4.7" (12cm) tall.

1.2" x 4.7"

2863982


NEW
ICON LEATHER KEY RING

Quality key ring featuring the icon logo in metal. Made with a special leather work technique. 2.2" (5.5cm) wide x 3.9" (10cm) tall.

2.2" x 3.9"

2869774


ICON LEATHER KEY RING

Quality key ring featuring the embossed icon logo on both sides. Made with a special leather work technique. 2.2" (5.5cm) wide x 3.5" (9cm) tall.

2.2" x 3.5"

2863965


SCRIPT LEATHER KEY RING

Keep your keys safe with this modern key ring with script logo embossed on both sides. 1.2" (3cm) wide x 4.7" (12cm) tall.

1.2" x 4.7"

2863926


NEW
CHRISTMAS BAUBLES

Trim your tree with this beautiful set of six Indian Motorcycle® Christmas baubles with printed headdress logos on both sides. Diameter: 3.1" (8cm)

SET OF 6

2869770


NEW
HOLIDAY STOCKING

This set of two Indian Motorcycle® holiday stockings is loaded with holiday spirit. Set includes two different colors with repeating pattern of branded logos. Made of 100% cotton with sherpa top.

SET OF 2

2869771

